



SUPERIOR SERVICE • QUALITY PRODUCTS

Stainless Steel Handrail + Glass Systems

BRISBANE | SYDNEY | MELBOURNE

www.jgtrading.com.au

ASSDA
Australian Stainless Steel
Development Association

Table of Contents

Introduction

Catalogue Preface	03
What is Stainless Steel	04
Magnetic Effects of Stainless Steel	05
Environmental Benefits	06
'Tea Staining' Effects	07
Manufacturing Process	08/09

Pre-Fabricated Posts



Ready To Go Off-the-Shelf	10
Made-to-Order Posts	11

Stainless Steel Tubing



Square / Round Tubing	12
Slotted Tubing	12

Handrail Systems Round



Ends	
End Caps	14
Handrail Ends	15
Supports	
Handrail Parapet Rail Supports	15
Adjustable Rail Supports	22/23
Handrail Supports	25
Joiners	
Flush Joiners	16/17/18
Perpendicular Joiners	19
Base Plates / Flanges	
Round Base Plates / Cover Plates	20/21
Base Plates / Flanges	21/22
Post Reducers	24

Handrail Systems Slotted



Blanking Strip	26
End Caps	26
Flush Joiners	26/27

Product Showcase

13/28-33/45/48-49

Handrail Systems Square



Square Range (Satin)	
Joiners / End Cap	34
Perpendicular Joiner	34

Base Plates / Flanges	35
Adjustable Rail Support / Post Reducers	36

Square Range (Mirror)

Joiners / End Cap	37
Perpendicular Joiner	34
Base Plates / Flanges	38/39
Adjustable Rail Support / Post Reducers	38/39

Glass Clamps



Glass Clamp Installation	40
'D' Type	41/42
Medium 'D' Type Supports	43
Square Type	44

Glass Hinges / Latches



Glass Pins	46
Glass Handrail Supports	46
Diverse Glass Clamps	47
Pool Fencing Hinges	50
GateGuard System	
GateGuard Latches / Hinge Cap	51
GateGuard Hinges	51/52
GateGuard Gate Configurations	53

Toughened Glass Panels



Standard / GateGuard Gates	54
10mm Glass Panels	54
Drilled 12mm Glass Panels	54/55

Stainless Steel Protection



Poligrat Surface Finishing Products	56
Inox Protective Products	57

Tools & Accessories



Tools	
Pop Rivet Tools	58
Blind Rivet Nut Tools	58
Hardware	
Stainless Steel Pop Rivets	59
Button Head Cap Screws	59
Blind Rivet Nuts	59
Replacement Mandrels	59
Two-Part Epoxy Glue Sets	59

Catalogue Preface

Modular Handrail & Glass Systems

J & G Trading is proud to introduce our range of quality stainless steel modular handrail components, glass clamps and tubing. Being modular in design, our handrail system negates the need for welding, grinding and polishing your handrail job when the need for bends, angles and joins arises.

Our system offers many advantages over a fully fabricated handrail job:

- Labour time reduced by more than 1/3
- Improved surface finish
- Can be supplied In DIY kit form
- Lower material costs
- No specialised tooling required
- No previous experience required
- Professional results

Our Products

Over 1500 stock product lines across a range of categories. In-house swaging, fabrication and assembly facilities. Strategic overseas alliances to provide the latest in global product trends.

Our Facilities

Showrooms, sales offices and warehouses in Brisbane, Sydney & Melbourne. Extensive distributor network throughout Australia & New Zealand. Interactive website with all current products displayed.

Assembly Methods

Our Stainless Steel handrail systems allows you to achieve a quality finish to a job without the need for the specialised equipment for stainless steel fabrication. The fine tolerances of the fitting sizes enables the handrail to be assembled using any of the following:

- Knock-in only
- Pop rivets
- Two-part stainless steel epoxy glue
- Tec screws
- Blind rivet nut & cap screw
- TIG Weld for commercial & structural applications

How to Use This Catalogue

This catalogue has been created to aid in product selection, provide detailed product specifications, and assist with your ordering process. The information contained herein is subject to change without prior notice, and should not be used as an infallible guide to specifications.

Should you require further assistance or information on any of these products, please contact your local distributor.

- **For take off measurements please check measure products before commencing job**
- **All fittings are mirror polished unless otherwise stated**

All dimensions are in millimetres unless otherwise specified. The following is a list of abbreviated terms as contained in this catalogue:

- **AISI 304** = 304 Grade Stainless Steel
- **AISI 316** = 316 Grade Stainless Steel
- **Wgt** = Weight of an item (g or Kg)
- **Wall** = Required tube wall thickness

How to Order

Contact your local distributor for further information on how to order these products. Please note that pricing, delivery charges, terms of payment and returns policies are set by the distributor.

Catalogue Acknowledgements

Produced and collated by the staff at J & G Trading on March 2011. General product catalogue available on request from J & G Trading.

Our Mission

To provide excellence in customer service through the delivery of superior quality products, J & G Trading aims to lead through price competitiveness, innovation and integrity.

What is Stainless Steel?

What is Stainless Steel?

Stainless steel is a generic term for a family of corrosion resistant alloy steels containing 10.5% or more chromium.

All stainless steels have a high resistance to corrosion. This resistance to attack is due to the naturally occurring chromium-rich oxide film formed on the surface of the steel. Although extremely thin, this invisible, inert film is tightly adherent to the metal and extremely protective in a wide range of corrosive media. The film is rapidly self repairing in the presence of oxygen, and damage by abrasion, cutting or machining is quickly repaired.

Why Choose Stainless Steel?

+ Corrosion resistance

All stainless steels have a high resistance to corrosion. Low alloyed grades resist corrosion in atmospheric conditions; highly alloyed grades can resist corrosion in most acids, alkaline solutions, and chloride bearing environments, even at elevated temperatures and pressures (refer illustrations below).

Corrosion Resistant Properties



In any normal oxidising environment a protective coating of passive chromium rich oxide film is automatically formed on stainless steel.



When scratched, damaged or machined this protective film is denuded exposing the steel to the atmosphere.



The protective coating is quickly restored through the rapid self-repairing quality of the chromium rich film.



+ High and low temperature resistance

Some grades will resist scaling and maintain high strength at very high temperatures, while others show exceptional toughness at cryogenic temperatures.

+ Ease of fabrication

The majority of stainless steels can be cut, welded, formed, machined and fabricated readily.

+ Strength

The cold work hardening properties of many stainless steels can be used in design to reduce material thicknesses and reduce weight and costs. Other stainless steels may be heat treated to make very high strength components.

+ Aesthetic appeal

Stainless steel is available in many surface finishes. It is easily and simply maintained resulting in a high quality, pleasing appearance.

+ Hygienic properties

The cleanability of stainless steel makes it the first choice in hospitals, kitchens, food and pharmaceutical processing facilities.

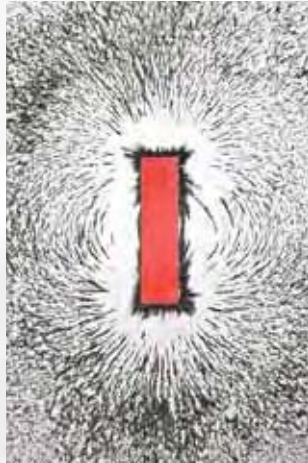
+ Life cycle characteristics

Stainless steel is a durable, low maintenance material and is often the least expensive choice in a life cycle cost comparison.

Magnetic Effects of Steel

Magnetic Effects of Stainless Steel

The magnetic properties of materials are affected by their composition, metallic structure, processing methods and physical condition. Ferromagnetic materials are strongly attracted to a permanent magnet and may also be magnetised to act as a permanent magnet.



Permeability is the property used to measure how well a material concentrates the magnetic field. It gives an indication of the strength of the attraction to a magnet. It is more usual to refer to the relative permeability. This is measured relative to the value for air or vacuum taken as 1.

+ Cold work

Wrought, austenitic stainless steels, such as '304' and '316', are generally regarded as non-magnetic in the annealed condition, ie they are not attracted significantly by a magnet. **However, if they are cold worked they will be attracted to a permanent magnet.** The change occurs because the cold work deformation induces a transformation of the microstructure from austenite to martensite. The effect is less marked in alloys with high concentrations of austenite stabilisers such as nickel, nitrogen and carbon. Once the martensite is formed, it may also become magnetised sufficiently to pick-up light objects such as paper clips.

Magnetic attraction effects are most often noticed in heavily cold worked fabrications such as wire or the dished end of a pressure vessel. It is possible to remove the magnetic effects by solution annealing and water quenching but this will also reduce the tensile properties and may give rise to distortion.

Castings automatically require a higher percentage of ferrite so that tearing does not occur during the casting process increasing the magnetic properties.

ASSDA
Australian Stainless Steel
Development Association

© Copyright ASSDA 2010
J & G Trading is a member of ASSDA

Stainless Steel the All-Round Performer...

When used properly, stainless steel enjoys a strong and enduring reputation for visual appeal and structural integrity in a wide range of applications and environments.

Applications



+ Architectural Building Products



+ Residential & Commercial



+ Marine



+ Transport



+ Art and Design



+ Food, Beverage & Pharmaceutical



+ Process & Heavy Engineering

Environmental Benefits

Stainless Steel and the Environment



In response to the growing awareness that our quality of life depends upon protection of our environment, consumers and regulators are directing their resources towards products less harmful to the environment. The challenge to specifiers is clear: understand the “cradle to grave” characteristics of materials and make ever more satisfying products from ever more benign materials.

In use, stainless steel is durable and requires a minimum of maintenance, outlasting many competing products and eliminating requirements for additional potentially hazardous materials such as paint, fire protective coatings, cleaners and solvents.

Stainless steel is a valuable scrap material. It is **100% recyclable** and a preferred raw material input by steel makers. Stainless steel production incorporates high levels of scrap use (as high as 80% of charged materials will be scrap stainless steel).

New stainless steel comprises at least 50% recycled stainless steel product and more than half the stainless steel produced today has already been another useful stainless steel product in the past. Even beer kegs wear out eventually. Power is expensive and modern stainless mills operate close to the theoretical minimum.

Despite the very high recycling of old stainless steel products, some stainless steel will find its way to landfills or other disposal sites. In these circumstances no detrimental effect to soil or ground water is expected.

New Stainless Steel Has At Least 50% Scrap Metal

Stainless steel is a valuable scrap material. It is 100% recyclable and a preferred raw material input by steel makers. Stainless steel production incorporates high levels of scrap use.

'Tea Staining' Effects

Stainless Steel 'Tea Staining'



Incorrect specification, fabrication or subsequent handling in coastal environments may cause stainless steel to stain or discolour, impairing the overall look. This brown discolouration, or tea staining has been identified in coastal applications in Australia and overseas.

Tea staining mostly occurs within about five kilometres of the beachfront, or a few hundred metres from a sheltered bay and worsens closer to the marine source. Other environmental factors may contribute to the problem such as wind exposure, industrial pollution, and elevated temperatures where tea staining may occur up to 20 kilometres from the sea. Tea staining can be controlled. It does not affect the structural integrity or the longevity of the material.

+ Design, Fabrication and Handling

Poor design and fabrication can lead to tea staining or more serious corrosion of stainless steels. In the design stage, it is advised to avoid crevices such as intermittent welds and areas where water can collect. During the fabrication process, it is advised to avoid carbon steel contamination.

+ Choose a smoother surface

Rough surface finishes promote tea staining. The main cause of this problem is salt deposited on the stainless steel surface. The smoother the surface the better. To reduce the risk of tea staining **choosing** or **creating** a smoother surface is an ideal combatant. Smoother surface finishes stay cleaner between washes and don't have deep surface grooves where

chlorides and other contaminants can collect and concentrate. A process called **pickling** may be used to remove surface contaminants, but may dull the surface. Alternately **electro polishing** may be used, and has the added benefit of brightening the surface.

+ Specify Grade '316' Stainless Steel

As outlined in the previous section, Grade 316 is ideal for marine and highly corrosive environments. Regular maintenance and use of lanolin protective products will ensure the best resistance against tea staining and corrosive effects.



+ Maintenance and Protection

Even smooth stainless steel finishes in coastal environments may show tea staining if not **washed regularly**. Rain washing the stainless steel surface can help reduce tea staining, and should therefore be an important project design consideration. Best results are achieved by washing with soap or mild detergent and warm water followed by rinsing with clean cold water. Surface appearance may be further improved by wiping dry the washed surface and treating the stainless steel with **Inox** or **Polinox** Protective range (refer pages 56 – 57 for more information on these products).

Manufacturing Process

Premium Stainless Steel Handrail Components



JG Trading source premium stainless steel handrail components from highly experience and accredited partners. A complete line of handrail fittings that have been developed to meet various building and construction handrail requirements is readily available. Various types, styles and sizes of stainless steel handrail fittings are available for domestic, commercial and outdoor applications. Numerous styles, quality polishing, welding and prompt delivery are also a part of this versatile range of handrail systems.

+ Original Equipment Manufacturers (OEM)



Our partners serve many Original Equipment Manufacturers (OEMs) by meeting their complex handrail fitting needs in a timely and cost effective manner and offers an extended high quality product range which they are able to sustain through continued high grade testing. This strategic alliance with one of Taiwans leading manufacturers ensures success from initial product design through to delivery of the final product.

Lost Wax Casting

Step 1: Die Design of Handrail Fittings



Handrail component designers work with die-makers throughout the design and fabrication of the die using the latest industry standard software. The Computer-Aided-Manufacturing

(CAM) is capable to read data files and generates complex molds efficiently assisting in providing accurate, low cost injection molds. Engineers help to determine the cast-ability of the handrail fitting design, and suggestions may be made to improve casting design or performance. These engineers are also fully conversant with production processes, and their presence in the factories provides continual support during production.

Step 2: Wax Pattern Making - Injection of Melted Wax



Wax replicas of the desired castings are produced by injection moulding using a metal die. Melted wax is injected into the die, creating an exact wax replica of the part. The wax

pattern must be injected for every finished part. In the case of a prototype, a heat disposable pattern is generated using a CAD file.

Step 3: Wax Pattern Assembly



The casting process begins by producing a wax pattern employing a precision mold. The wax patterns are fastened by the gate to a runner to form a cluster. The cluster is dipped

in refractory slurry and coated with fine sand then dried. The process of dipping and drying is repeated until a robust thickness is achieved. After this, the ceramic shell is heated, and the wax is melted away. These patterns are attached via a 'gate' to a central wax stick, referred to as a 'tree' or 'sprue', to form a casting cluster or assembly, and mounted on a pouring cup.

Lost Wax Casting



Step 4: Shell Building



A shell is built by immersing the assembly in a liquid ceramic slurry and then into a bed of extremely fine sand. Several layers may be applied in this manner.

Step 5: Dipping and Drying

The process of dipping and drying is repeated until a robust thickness is achieved. After this, the ceramic shell is heated, and the wax is melted away. This leads the mold into a cavity that can be filled with the molten metal.

Step 6: Dewaxing



The hollow mold is fired, and the liquid alloy is poured into the pre-heated mold. After the metal has solidified, the slurry shell is broken off and the individual part is cut away from the connecting gates. The parts are cleaned and subjected to further secondary operations.

Step 7: Melting & Pouring



The shell is filled with molten metal using various techniques and, as the metal cools, the parts, gates, tree and pouring cup become a solid casting.

Step 8: Knock Out & Cleaning



When the metal has cooled and solidified, the ceramic shell is broken off by vibration or water blasting. A metal melt casting apparatus comprises a vessel for containing the melt and

having a wall portion on a downwardly pointing melt tapping hole, the vessel is then tilted so that this wall portion can be raised and lowered.

A fountain has a top for receiving the melt when registered with said tapping hole and a bottom for connection with the bottom of the mold. A gas-tight elastically deflectible sealing means interconnection between the tapping hole and the fountain top when the mentioned wall portion is lowered thereon by tilting of the vessel.

The sealing is made in the form of two parts which elastically flexibly engage when the converter wall with the tapping hole is lowered on the top of the fountain, one part being connected to the wall and the other part being connected to the fountain. The sealing means is provided with a gas passage so that the tapping metal stream may be subject to evacuation for degassing or surrounded by an inert gas.

Step 9: Cutting



The parts are cut away from the central tree using a high speed friction saw.

Step 10: Finishing



Minor finishing operations, such as polishing, fettling and grinding, are undertaken to produce a metal casting identical to the original wax pattern.



Pre-Fabricated Posts



READY TO GO OFF-THE-SHELF

PRE-FABRICATED POSTS



READY TO GO OFF-THE-SHELF



Round '2 Inch' Pre-Fabricated Posts AISI 316 (Mirror Finish Only)

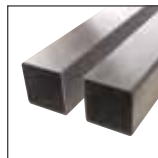
- Base pre-welded to J&G's optimum standards
- Choose from a 3 hole open flange or base + cover set
- No lead time for manufacturing these are ready to go and ideal for most balustrade and pool fencing applications

Code	Description	Height
RMPFP-01	2" Round Post + open flange	1000mm
RMPFP-02	2" Round Post + base/cover set	1000mm
RMPFP-13	2" Round Post + open flange	1300mm
RMPFP-14	2" Round Post + base/cover set	1300mm

TIP: Be sure to check with your local Council for current building regulations prior to ordering



READY TO GO OFF-THE-SHELF



Square '2 Inch' Pre-Fabricated Posts AISI 316 (Satin Finish)

- Base pre-welded to J&G's optimum standards
- No lead time for manufacturing these are ready to go and ideal for most balustrade and pool fencing applications

Code	Description	Height
SSMPFP-01	2" Square post + 4 hole flange	1000mm
SSMPFP-13	2" Square post + 4 hole flange	1300mm

TIP: Be sure to check with your local Council for current building regulations prior to ordering



READY TO GO OFF-THE-SHELF



Square '2 Inch' Pre-Fabricated Posts AISI 316 (Mirror Finish)

- Base pre-welded to J&G's optimum standards
- No lead time for manufacturing these are ready to go and ideal for most balustrade and pool fencing applications

Code	Description	Height
SMPFP-01	2" Square post + 4 hole flange	1000mm
SMPFP-13	2" Square post + 4 hole flange	1300mm

TIP: Be sure to check with your local Council for current building regulations prior to ordering



Pre-Fabricated Posts

MADE-TO-ORDER POSTS



MADE-TO-ORDER POSTS



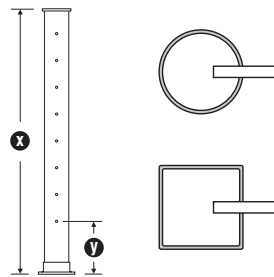
Made-To-Order Pre-Fabricated Posts

- Made-to-order posts to suit your project requirements
- End post, centre post and corner post configurations
- Round or square posts in any size or finish (see page 12)
- Any top fitting from this catalogue can be added (ie end cap, flush joiner, perpendicular flush joiner, etc.)
- Any base fitting from this catalogue can be added (ie round base plate, square base plate, etc.)
- Blind rivet nuts can be inserted for wire balustrading (see page 59)

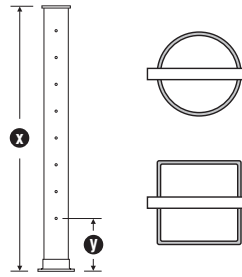
TIP: Be sure to check with your local Council for current building regulations prior to ordering

PRE-FABRICATED POSTS

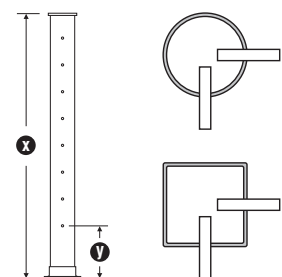
End Post



Centre Post



Corner Post



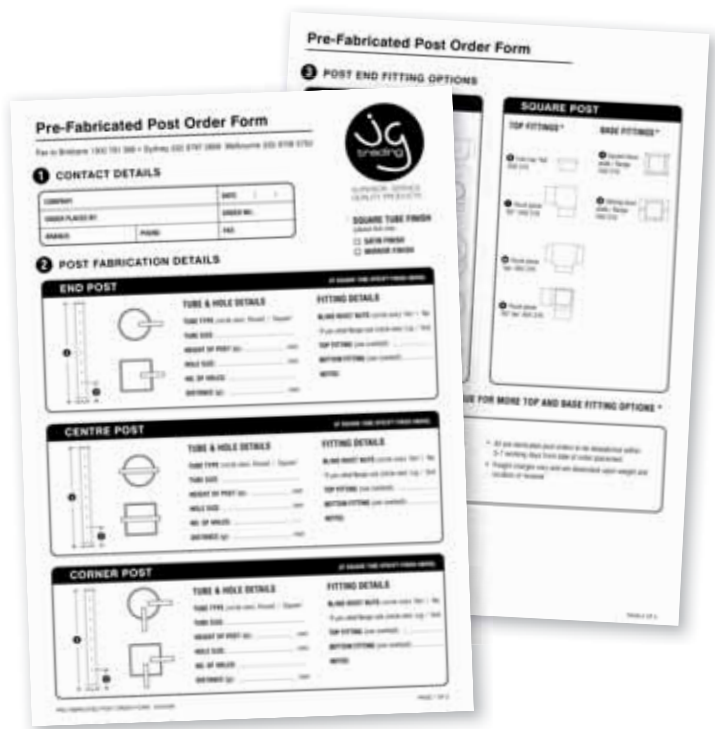
Ordering Process

Posts manufactured to your customers specifications to suit any type of application. All components used are J&G optimum quality and finished to the same industry leading standard. You supply us with the post type and specifications and select the fittings then we do the rest it couldn't be simpler.

Having your rails pre-cut and drilled means all that is left to do is fix your post to your base material, fit your handrail and finally add your preferred wire or glass to finish.

To order your custom post simply:

- 1) Select your tube
- 2) Select your base fitting
- 3) Supply specifications for cutting and drilling
- 4) Select your top fitting

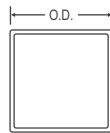
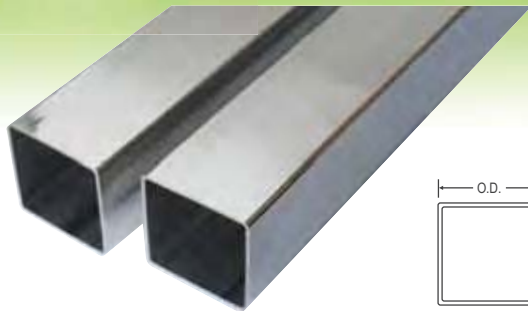


* Alternate products may be available, contact your supplier for further information



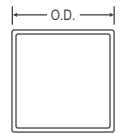
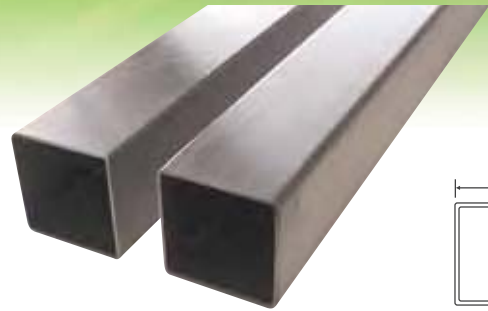
Stainless Steel Tubing

SQUARE TUBE // SLOTTED TUBE // ROUND TUBE



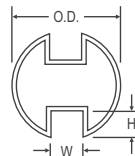
Square Stainless Steel Welded Tube ASTM A554 (Mirror)

Code	O.D.	Wall	Polish	Lgth	Grade	Wgt
MST-316-2-6M	2"	1.5mm	600g	6mtr	AISI 316	13kg



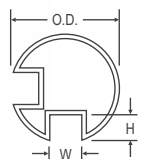
Square Stainless Steel Welded Tube ASTM A554 (Satin)

Code	O.D.	Wall	Polish	Lgth	Grade	Wgt
ST-316-2-6M	2"	1.5mm	180g	6mtr	AISI 316	13kg



Round Slotted Stainless Steel Welded Tube ASTM A554 AISI 316

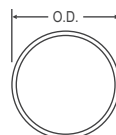
Code	O.D.	Wall	W	H	Slot	Polish	Lgth	Wgt
RT-SS-316-2	2"	1.5mm	15	15	Single	600g	6mtr	13kg
RT-DS-316-2	2"	1.5mm	15	15	Double	600g	6mtr	15kg



Round '90°' Slotted Stainless Steel Welded Tube ASTM A554 AISI 316

• Ideal for corner posts for balustrading and pool fencing

Code	O.D.	Wall	W	H	Polish	Lgth	Wgt
RT-NS-316-2-3M	2"	1.5mm	15	15	600g	3mtr	6.5kg



Round Stainless Steel Welded Tube ASTM A554 AISI 316

Code	O.D.	Wall	Polish	Lgth	Wgt
RT-316-1/2-6M	½"	1.2mm	600g	6mtr	2.0kg
RT-316-1-6M	1"	1.5mm	600g	6mtr	4.0kg
RT-316-1.5-3M	1 ½"	1.5mm	600g	3mtr	3.5kg
RT-316-1.5-6M	1 ½"	1.5mm	600g	6mtr	7.0kg
RT-316-2-3M	2"	1.5mm	600g	3mtr	5.5kg
RT-316-2-6M	2"	1.5mm	600g	6mtr	11kg
RT-316-2.5-6M	2 ½"	1.5mm	600g	6mtr	14kg



PREMIUM STAINLESS STEEL

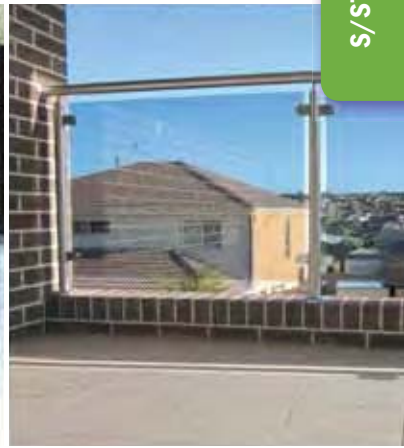


Product Showcase

HANDRAIL SOLUTIONS



Limited only by
your imagination...



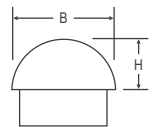
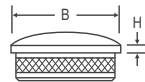
S/STEEL TUBING





Handrail Systems Round

END CAPS



End Cap 'Self Grip' AISI 316

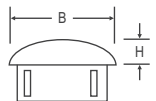
- A popular cast, intermediate dome cap with knurled grip for fit into tube

Code	Tube Ø	Wall	B	H	Wgt
1517A	1 ½"	1.5mm	38.1	2.5	65g
2017A	2"	1.5mm	50.8	2.5	125g

End Cap 'Dome' AISI 316

- A popular cast dome cap, used for handrail ends or freestanding post tops

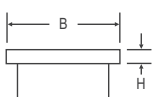
Code	Tube Ø	Wall	B	H	Wgt
1018A	1"	1.5mm	25.4	13	30g
1518A	1 ½"	1.5mm	38.1	19	78g
2018A	2"	1.5mm	50.8	25	160g



End Cap 'Light Knock-In' AISI 316

- Attractive self holding, slightly domed end cap
- A soft faced hammer is used to tap these in place
- Suitable for handrail ends or freestanding post tops

Code	Tube Ø	Wall	B	H	Wgt
1030A	1"	1.5mm	25.4	4.0	7g
1530A	1 ½"	1.5mm	38.1	6.0	15g
2030A	2"	1.5mm	50.8	8.0	26g



End Cap 'Flat' AISI 316

- A popular cast true flat end cap, used for handrail ends or freestanding post tops

Code	Tube Ø	Wall	B	H	Wgt
1019A	1"	1.5mm	25.4	1.8	20g
1519A	1 ½"	1.5mm	38.1	3.5	66g
2019A	2"	1.5mm	50.8	4.0	113g

H/RAIL SYSTEMS ROUND



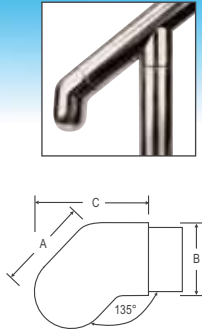
Showcase

Handrail + dome end cap
+ adjustable rail support



Handrail Systems Round

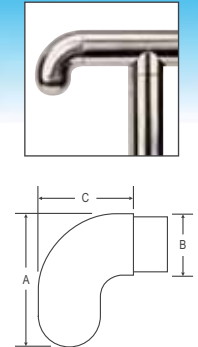
HANDRAIL ENDS // HANDRAIL SUPPORTS



Handrail End '45°' AISI 316

- A 45° cast handrail end mainly used for stairway handrail terminations

Code	Tube Ø	Wall	A	B	C	Wgt
2025A	2"	1.5mm	70	50.8	83	400g



Handrail End '90°' AISI 316

- A 90° cast handrail end mainly used for stairway handrail terminations

Code	Tube Ø	Wall	A	B	C	Wgt
2026A	2"	1.5mm	89	50.8	70	380g



Handrail Support 'Radiused' AISI 304

- Concealed base handrail support with radiused top
- Designed to be mounted on top of a nub wall, vertical wall or floor
- Cover tightens onto base via the allen key screw on the side

Code	Tube Ø	A	C	D	E	F	G	R	Wgt
1540A	1 1/2"	76	57	6	12	31	9	1 1/2"	260g
2040A	2"	76	57	6	12	31	9	2"	266g



Parapet Rail Support 'Centre Support' AISI 304

- Concealed base handrail centre support
- Designed to be mounted on top of a nub wall, vertical wall or floor
- Cover tightens onto base via the allen key screw on the side

Code	Tube Ø	A	B	C	D	E	F	G	Wgt
1558A	1 1/2"	100	38.1	78	6	12	31	9	285g
2058A	2"	100	50.8	78	6	12	31	9	296g



Parapet Rail Support 'End Support' AISI 304

- Concealed base handrail end support
- Designed to be mounted on top of a nub wall, vertical wall or floor
- Cover tightens onto base via the allen key screw on the side

Code	Tube Ø	A	B	C	D	E	F	G	Wgt
1559A	1 1/2"	100	38.1	78	6	12	31	9	294g
2059A	2"	100	50.8	78	6	12	31	9	325g



Parapet Rail Support 'Corner Support' AISI 304

- Concealed base handrail corner support
- Designed to be mounted on top of a nub wall or floor to achieve a 90° corner
- Cover tightens onto base via the allen key screw on the side

Code	Tube Ø	A	B	C	D	E	F	G	Wgt
1560A	1 1/2"	100	38.1	78	6	12	31	9	300g
2060A	2"	100	50.8	78	6	12	31	9	335g

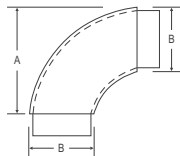
H/RAIL SYSTEMS ROUND

* Alternate products may be available, contact your supplier for further information



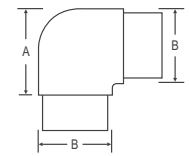
Handrail Systems Round

FLUSH JOINERS



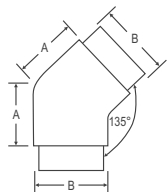
Flush Joiner 90° Radiused AISI 316

Code	Tube Ø	Wall	A	B	Wgt
1501E	1 1/2"	1.5mm	66	38.1	271g
2001E	2"	1.5mm	66	50.8	395g



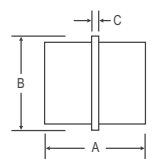
Flush Joiner 90° AISI 316

Code	Tube Ø	Wall	A	B	Wgt
1002E	1"	1.5mm	38	25.4	102g
1502E	1 1/2"	1.5mm	51	38.1	235g
2002E	2"	1.5mm	57	50.8	415g



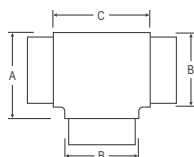
Flush Joiner 135° AISI 316

Code	Tube Ø	Wall	A	B	Wgt
1003E	1"	1.5mm	22	25.4	82g
1503E	1 1/2"	1.5mm	41	38.1	274g
2003E	2"	1.5mm	43	50.8	418g



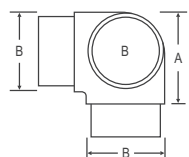
Flush Joiner 'In-Line' AISI 316

Code	Tube Ø	Wall	A	B	C	Wgt
1004E	1"	1.5mm	38	25.4	3.0	45g
1504E	1 1/2"	1.5mm	51	38.1	3.0	112g
2004E	2"	1.5mm	54	50.8	3.0	120g



Flush Joiner 'Tee' AISI 316

Code	Tube Ø	Wall	A	B	C	Wgt
1005E	1"	1.5mm	36	25.4	45	123g
1505E	1 1/2"	1.5mm	51	38.1	60	282g
2005E	2"	1.5mm	57	50.8	66	465g



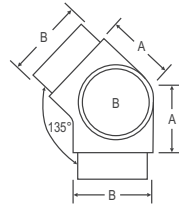
Flush Joiner '90° Tee' AISI 316

Code	Tube Ø	Wall	A	B	Wgt
1006E	1"	1.5mm	32	25.4	125g
1506E	1 1/2"	1.5mm	51	38.1	294g
2006E	2"	1.5mm	55	50.8	450g



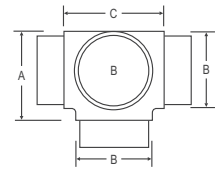
Handrail Systems Round

FLUSH JOINERS



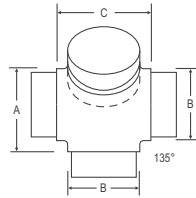
Flush Joiner '135° Tee' AISI 316

Code	Tube Ø	Wall	A	B	Wgt
1507E	1 1/2"	1.5mm	38	38.1	241g
2007E	2"	1.5mm	48	50.8	500g



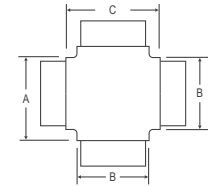
Flush Joiner '4-Way Tee' AISI 316

Code	Tube Ø	Wall	A	B	C	Wgt
1508E	1 1/2"	1.5mm	51	38.1	60	340g
2008E	2"	1.5mm	57	50.8	67	590g



Flush Joiner 135° 'Star' AISI 316

Code	Tube Ø	Wall	A	B	C	Wgt
1509E	1 1/2"	1.5mm	51	38.1	60	318g
2009E	2"	1.5mm	57	50.8	67	537g



Flush Joiner 4-Way 'Star' AISI 316

Code	Tube Ø	Wall	A	B	C	Wgt
1510E	1 1/2"	1.5mm	60	38.1	60	419g
2010E	2"	1.5mm	67	50.8	67	490g

H/RAIL SYSTEMS ROUND

Showcase

Flush tee joiners + round tubing + base plates

* Alternate products may be available, contact your supplier for further information

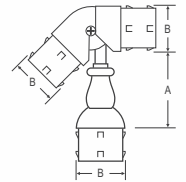


Handrail Systems Round

FLUSH JOINERS ADJUSTABLE



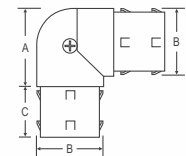
H/RAIL SYSTEMS ROUND



Flush Joiner 3-Way 'Adjustable' AISI 304

- Flexible joiner used for stairway handrails or angled handrail
- Adjusts from 120° to 180°

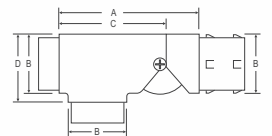
Code	Tube Ø	Wall	A	B	Wgt
334E	2"	1.5mm	73	50.8	650g



Flush Joiner 'Adjustable' AISI 316

- Flexible joiner used for stairway handrails or angled handrail
- Adjusts from 90° to 180°

Code	Tube Ø	Wall	A	B	C	Wgt
349E-1.5	1 1/2"	1.5mm	41	38.1	29	255g
349E-2	2"	1.5mm	57	50.8	38	485g



Flush Joiner 'Adjustable Tee' AISI 316

- Flexible joiner used for stairway handrails or angled handrail
- Adjusts from 90° to 180°

Code	Tube Ø	Wall	A	B	C	D	Wgt
2061A	2"	1.5mm	130	50.8	93	60	867g

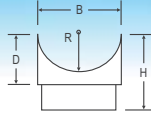
Showcase

Tube + flush joiner 90° + adjustable rail support



Handrail Systems Round

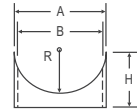
PERPENDICULAR JOINERS



Perpendicular Joiner 'Flush Fitting' AISI 316

- Join posts to a horizontal h/rail or join horizontal h/rails to vertical posts
- All joiners are radiused to suit the top handrail as below specifications
- Fix joiners to the top h/rail with screws or rivets through the underneath internal

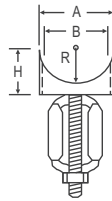
Code	Tube Ø	Wall	B	D	H	R	Wgt
1027A	1"	1.5mm	25.4	7	30	1"	30g
1027A-1.5	1 1/2"	1.5mm	25.4	7	30	1 1/2"	30g
1027A-2	1"	1.5mm	25.4	7	30	2"	30g
1527A-1.5	1 1/2"	1.5mm	38.1	15	41	1 1/2"	89g
1527A-2	1 1/2"	1.5mm	38.1	15	41	2"	89g
2027A	2"	1.5mm	50.8	29	54	2"	159g



Perpendicular Joiner 'External Cap' AISI 316

- Suitable for joining vertical posts to horizontal handrails
- The external fit negates the need for a true flat tube cut

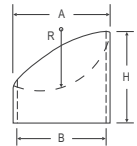
Code	Tube Ø	A	B	H	R	Wgt
313A-1/2	1/2"	15.8	13.1	10.2	2"	6g
313A-1	1"	28.5	25.8	17	2"	22g
313A-1.5-1.5	1 1/2"	43.0	39.0	30	1 1/2"	55g
313A-1.5	1 1/2"	43.0	39.0	30	2"	55g
313A-2	2"	55.0	51.5	39	2"	96g



Perpendicular Joiner Expanding Cage 'External Fit' AISI 316

- External fit joiner cap and expanding internal cage
- Suitable for joining posts to handrails or mid rails to posts
- The external fit negates the need for a true flat tube cut
- Insert the cage into the tube, hold the cap and turn the post until the cap is tight

Code	Tube Ø	A	B	H	R	Wgt
313AL-1	1"	28.5	25.8	17	2"	41g
313AL-1.5-1.5	1 1/2"	43.0	39.0	31	1 1/2"	96g
313AL-1.5	1 1/2"	43.0	39.0	31	2"	96g
313AL-2	2"	55.0	51.5	39	2"	188g



Perpendicular Joiner '37° External Cap' AISI 316

- Suitable for joining vertical posts to angled stairway handrails
- The external fit negates the need for a true flat tube cut

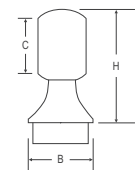
Code	Tube Ø	A	B	H	R	Wgt
314A-1	1"	28.5	25.8	32	2"	34g
314A-1.5-1.5	1 1/2"	42.0	38.8	44	1 1/2"	106g
314A-1.5-2	1 1/2"	42.0	38.8	44	2"	106g
314A-2	2"	56.0	51.4	56	2"	188g



Perpendicular Joiner Expanding '37° External Cap' AISI 316

- Suitable for joining vertical posts to angled stairway handrails
- The external fit negates the need for a true flat tube cut

Code	Tube Ø	A	B	H	R	Wgt
314AL-1	1"	28.5	25.8	32	2"	120g
314AL-1.5-1.5	1 1/2"	42.0	38.8	44	1 1/2"	161g
314AL-1.5-2	1 1/2"	42.0	38.8	44	2"	180g
314AL-2	2"	56.0	51.4	56	2"	200g



Perpendicular Joiner Through Ring AISI 316

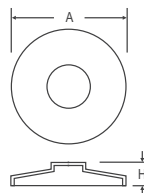
Code	Tube Ø	B	C	H	Wgt
2013A	2"	50.8	50.8	89	173g

* Alternate products may be available, contact your supplier for further information



Handrail Systems Round

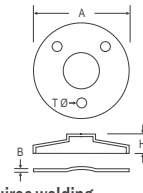
BASE PLATES // COVER PLATES



Round Cover Plate Only AISI 316

- Self holding cover plate
- Suitable for posts/handrails which are set into a surface or over a fixed base plate

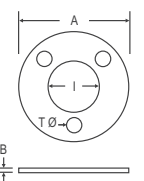
Code	Tube Ø	A	H	Wgt
1401BC	1 ½"	92	20	37g
2001BC	2"	110	20	49g



Round Base Plate With Cover (Weld) AISI 316

- A sheet material round base plate with self holding cover
- This item is suited for intermediate handrail posts and requires welding

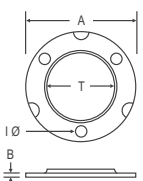
Code	Tube Ø	A	B	H	T	Grade	Wgt
1001C	1"	72	2.0	20	10.5	AISI 304	72g
1401C	1 ½"	92	2.0	20	10.5	AISI 304	125g
2001B	2"	110	2.0	20	10.5	AISI 316	173g
2401C	2 ½"	120	2.5	25	10.5	AISI 304	258g
3001C	3"	135	3.0	31	10.5	AISI 304	362g



Round Base Plate 'Heavy Duty' (Weld) AISI 316

- 3-hole base plate for commercial and structural applications
- Satin surface finish
- Clip on cover also available 2001A-C (this page)
- This item must be welded

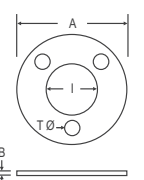
Code	Tube Ø	A	B	T	I	Wgt
2001D	2"	100	6.0	12.5	51	249g



Round Base Plate Only (Weld) AISI 304

- 3-hole base plate in mill surface finish
- This item must be welded

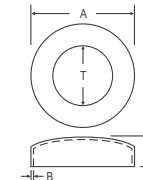
Code	Tube Ø	A	B	I	T	Wgt
0501A-B	½"	65	2.0	13.0	6.5	48g
1001A-B	1"	65	2.0	25.5	6.5	41g
1501A-B	1 ½"	80	2.0	38.3	6.5	59g
2001A-B	2"	100	3.0	51.0	8.5	133g



Round Base Plate Only (Weld) AISI 316

- 3-hole base plate with clip on cover
- This item must be welded
- Mirror polished cover plate

Code	Tube Ø	A	B	I	T	Wgt
0501A	½"	65	2.0	13.0	6.5	81g
1001A	1"	65	2.0	25.5	6.5	72g
1501A	1 ½"	80	2.0	38.3	6.5	100g
2001A	2"	100	3.0	50.1	8.5	217g



Round Cover Plate Only AISI 316

- Domed cover plate
- Suits posts/handrails which are set into a surface or over a fixed base plate

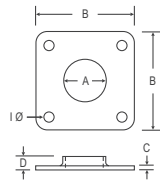
Code	Tube Ø	A	B	H	T	Finish	Wgt
0501A-C	½"	67	0.80	15	13.1	Mirror	30g
1001A-C	1"	67	0.80	15	25.8	Mirror	28g
1501A-C	1 ½"	82	0.80	17	38.4	Mirror	41g
2001A-C	2"	102	0.80	26	51.2	Mirror	88g
2001A-C-2	2"	102	0.80	26	51.2	Satin	88g

H/RAIL SYSTEMS ROUND



Handrail Systems Round

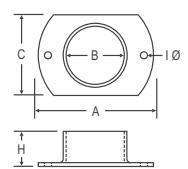
BASE PLATES // FLANGES



Square Base Plate 'Heavy Duty' (Weld) AISI 304

- Square, heavy duty 4-hole sheet type material base plate
- Suitable for commercial or domestic use where the need for strength is an issue
- This item requires welding to the underneath side of the plate

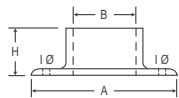
Code	Tube Ø	A	B	C	D	I	Wgt
1402S	1 ½"	38.4	110	3.0	17	10.5	266g
2002S	2"	51.0	110	4.0	19	10.5	330g
2402S	2 ½"	64.2	127	4.0	24	10.5	449g
3002S	3"	77.0	143	5.0	26	10.5	630g



Oblong Base Plate/Flange AISI 316

- Heavy duty cast 2-hole slab base
- Suitable for fixing handrails in between timber, masonry or steel posts
- May also be used for floor mounting where space is limited

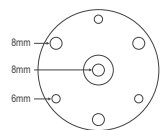
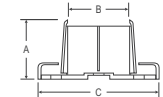
Code	Tube Ø	A	B	C	H	I	Wgt
1014A	1"	65	25.4	45	25	5.0	94g
1514A	1 ½"	75	38.1	56	25	5.0	140g
2014A	2"	100	50.8	70	31	7.0	236g



Round Base Plate/Flange AISI 316

- Popular heavy duty cast three hole base plate
- Suitable for fixing posts to flooring or handrails to walls or posts

Code	Tube Ø	A	B	H	I	Wgt
1016A	1"	70	25.4	25	5.0	105g
1516A	1 ½"	76	38.1	25	5.0	140g
2016A	2"	102	50.8	31	6.5	235g



Round Adjustable 'Heavy Duty' Base Plate With Cover AISI 316

- Height adjustable concealed heavy duty base plate
- Self-holding fins that grip onto the outside of the tube
- No welding required

Code	Tube Ø	A	B	C	Wgt
1099A	1"	35	25.4	67	145g
1599A	1 ½"	45	38.1	84	310g
2099A	2"	48	50.8	101	405g



H/RAIL SYSTEMS ROUND

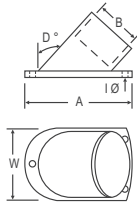
Showcase

Handrail + perpendicular joiners + wire balstrading



Handrail Systems Round

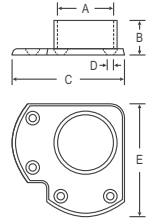
FLANGES // ADJUSTABLE RAIL SUPPORTS



Wall Stop Flange AISI 316

- Suitable for fixing handrails down stairways between timber, masonry or steel posts
- 3-hole cast angled flange (please specify stairway angle when ordering)
- Flange can be turned 180° to complete the stairway handrail

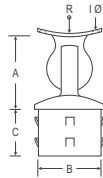
Code	Tube Ø	D	A	B	W	I	Wgt
1515B	1 1/2"	32°	97	38.1	64	6.5	205g
2015A	2"	45°	130	50.8	70	7.0	306g
2015C	2"	37°	110	50.8	70	6.0	260g



Corner Flange AISI 316

- Suited to top rail corner sections
- Ideal for corner sections on decks, pool fences or feature walls

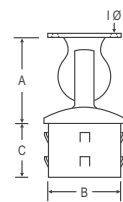
Code	Suit Post	A	B	C	D	E	Wgt
2014L	2"	50.8	31	85	6.0	100	338g



Adjustable Rail Support Radiused 'Internal Fit' AISI 316

- Fully adj. handrail support for fixing stairway posts to angled handrails
- External spring leaves grip tube internal for extreme hold and easy installation

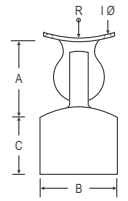
Code	Tube Ø	Wall	A	B	C	I	R	Wgt
315A-1	1"	1.5mm	32	25.4	19	4	1"	63g
315A-1-1.5	1"	1.5mm	32	25.4	19	4	1 1/2"	66g
315A-1-2	1"	1.5mm	32	25.4	19	4	2"	160g
315A-1.5	1 1/2"	1.5mm	45	38.1	29	5	1 1/2"	164g
315A-1.5-2	1 1/2"	1.5mm	45	38.1	29	5	2"	164g
315A-2	2"	1.5mm	51	50.8	32	5	2"	315g



Adjustable Rail Support Flat 'Internal Fit' AISI 316

- Fully adj. handrail support for fixing stairway posts to angled round handrails
- External spring leaves grip tube internal for extreme hold and easy installation

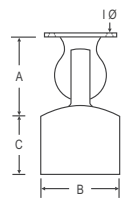
Code	Tube Ø	Wall	A	B	C	I	Wgt
315AP-1	1"	1.5mm	32	25.4	19	4	69g
315AP-1.5	1 1/2"	1.5mm	45	38.1	29	5	151g
315AP-2	2"	1.5mm	51	50.8	32	5	308g



Adjustable Rail Support Radiused 'External Fit' AISI 316

- Fully adj. handrail support for fixing stairway posts to angled round handrails
- Internal ribs negate the need for welding or a true end cut of the tube

Code	Tube Ø	Wall	A	B	C	I	R	Wgt
316A-1	1"	1.5mm	32	25.4	19	4	1"	67g
316A-1-2	1"	1.5mm	32	25.4	19	4	2"	72g
316A-2	2"	1.5mm	51	50.8	32	5	2"	316g



Adjustable Rail Support Flat 'External Fit' AISI 316

- Fully adj. handrail support for fixing stairway posts to angled round handrails
- Internal ribs negate the need for welding or a true end cut of the tube

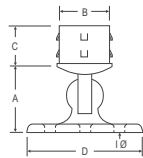
Code	Tube Ø	Wall	A	B	C	I	Wgt
316AP-2	2"	1.5mm	51	50.8	32	5	309g

H/RAIL SYSTEMS ROUND



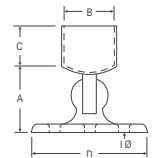
Handrail Systems Round

ADJUSTABLE RAIL SUPPORTS



Adjustable Rail Support Round Base 'Internal Fit' AISI 316

Code	Tube Ø	Wall	A	B	C	D	I	Wgt
315AC-1	1"	1.5mm	32	25.4	19	60	5	140g
315AC-1.5	1 ½"	1.5mm	38	38.1	22	76	6	228g
315AC-2	2"	1.5mm	51	50.8	26	101	6	488g



Adjustable Rail Support Round Base 'External Fit' AISI 316

Code	Tube Ø	Wall	A	B	C	D	I	Wgt
316AC-1	1"	1.5mm	32	25.4	19	60	5	126g
316AC-2	2"	1.5mm	51	50.8	26	101	6	489g



H/RAIL SYSTEMS ROUND

Showcase

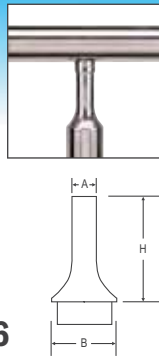
+ Adjustable rail supports
+ perpendicular joiners

* Alternate products may be available, contact your supplier for further information



Handrail Systems Round

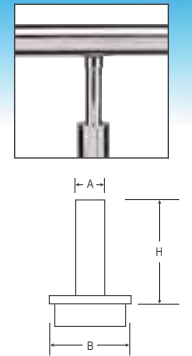
POST REDUCERS



Post Reducer 'Tapered' AISI 316

- Flush fitting slimline post top reducer for a decorative look
- Use with 313AL-1 (page 19) or 1027A (page 19) to join to horizontal handrail or 314AL-1 (page 19) to a stairway handrail
- If using a timber top rail use a 1014A (see page 21)

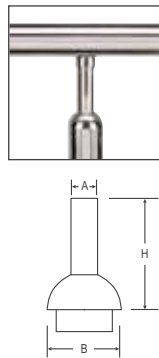
Code	Tube Ø	Wall	A	B	H	Wgt
1520A	1 ½"	1.5mm	¾"	38.1	84	110g
2020A	2"	1.5mm	1"	50.8	84	143g



Post Reducer 'Flat' AISI 316

- Flush fitting slimline post top reducer for a decorative look
- Use with 313AL-1 (page 19) or 1027A (page 19) to join to horizontal handrail or 314AL-1 (page 19) to a stairway handrail
- If using a timber top rail use a 1014A (see page 21)

Code	Tube Ø	Wall	A	B	H	Wgt
1522A	1 ½"	1.5mm	¾"	38.1	91	84g
2022A	2"	1.5mm	1"	50.8	91	186g



Post Reducer 'Dome' AISI 316

- Flush fitting dome post top reducer for a decorative look
- Use with 313AL-1 (page 19) or 1027A (page 19) to join to horizontal handrail or 314AL-1 (page 19) to a stairway handrail
- If using a timber top rail use a 1014A (see page 21)

Code	Tube Ø	Wall	A	B	H	Wgt
1512A	1 ½"	1.5mm	¾"	38.1	89	105g
2012A	2"	1.5mm	1"	50.8	89	177g



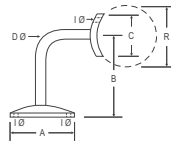
Showcase

Handrail + post reducers
flat + glass clamps +
round base plate/flanges



Handrail Systems Round

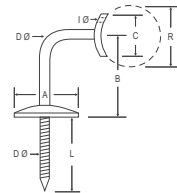
HANDRAIL SUPPORTS



Handrail Support 'Radiused' AISI 316

- 3-hole handrail support designed for fixing to any type of wall
- Radiused top with countersunk holes allows a handrail to be attached without the need for welding

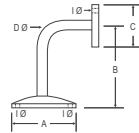
Code	A	B	C	D	I	R	Wgt
1528A	63	85	31	12	5.5	1 1/2"	247g
2028A	63	85	31	12	5.5	2"	247g



Handrail Support With Coach Screw 'Radiused' AISI 316

- Coach screw fix handrail support designed for fixing into timber stud wall
- Radiused top with countersunk holes allows a handrail to be attached without the need for welding

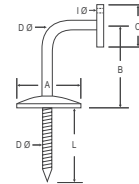
Code	A	B	C	D	I	L	R	Wgt
1528A-S	63	85	31	12	5.5	54	1 1/2"	270g
2028A-S	63	85	31	12	5.5	54	2"	270g



Handrail Support 'Flat Top' AISI 316

- 3-hole handrail support designed for fixing to any type of wall
- Flat top with countersunk holes allows a handrail to be attached without the need for welding

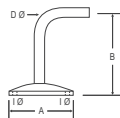
Code	A	B	C	D	I	Wgt
2029A	63	85	31	12	5.5	232g



Handrail Support With Coach Screw 'Flat Top' AISI 316

- Coach screw fix handrail support designed for fixing into timber stud wall
- The flat top with countersunk holes allows a handrail to be attached without the need for welding

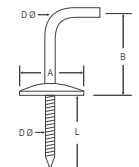
Code	A	B	C	D	I	L	Wgt
2029A-S	63	85	31	12	5.5	57	262g



Handrail Support Without Top AISI 316

- 3-hole handrail support designed for fixing to any type of wall
- Unradiused fitting allows any handrail to be welded or fastened to the bracket

Code	A	B	D	I	Wgt
2028A-B	63	85	12	5.5	235g



Handrail Support With Coach Screw Without Top AISI 316

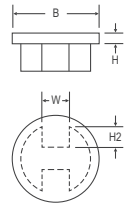
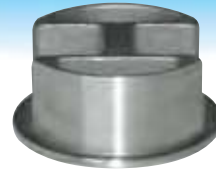
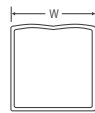
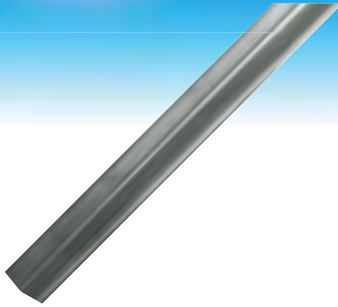
- Coach screw fix handrail support designed for fixing into timber stud wall
- Unradiused fitting allows any handrail to be welded or fastened to the bracket

Code	A	B	D	L	Wgt
2028A-S-B	63	85	12	57	230g



Handrail Systems Slotted

BLANKING STRIP // END CAPS // JOINERS



Round Slotted Tube Blanking Strip AISI 316

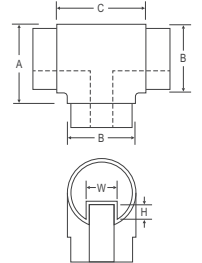
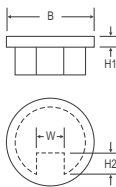
- Cut to size and fill in any gaps to complete handrails

Code	Tube	Suit Slot	Wall	Polish	Length	W	Wgt
RSST-STRIP	2"	15mm	1.5mm	600g	2mtr	15	1.5kg

End Cap 'Flat' AISI 316

- Use for handrail ends or freestanding post tops

Code	Tube	Wall	B	H1	H2	W	Wgt
RDST-2019	2" dbl slot	1.5mm	50.8	3.0	15	18	127g



End Cap 'Flat' AISI 316

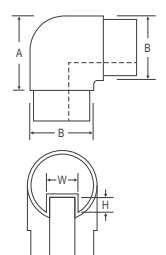
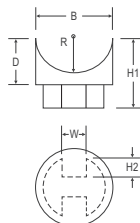
- Use for handrail ends or freestanding post tops

Code	Tube	Wall	B	H1	H2	W	Wgt
RSST-2019	2" single slot	1.5mm	50.8	3.0	15	18	103g

Flush Joiner 'Tee' AISI 316

- Bottom section suits double slotted tube
- Top section suits single slotted tube

Code	Tube	Wall	A	B	C	H	W	Wgt
RDST-2005	2" dbl/single slot	1.5mm	67	50.8	74	15	18	742g



Perpendicular Joiner 'Flush Fitting' AISI 316

- Join posts to a horizontal h/rail or join horizontal h/rail to vertical posts
- Fix joiners to top h/rail with screws or rivets through the underneath internal

Code	Tube	Wall	B	D	H1	H2	R	W	Wgt
RDST-2027	2" dbl slot	1.5mm	50.8	30	53	15	2"	18	208g

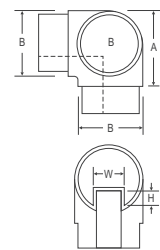
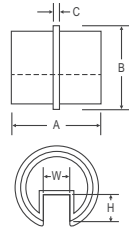
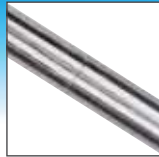
Flush Joiner '90°' AISI 316

Code	Tube	Wall	A	B	H	W	Wgt
RSST-2002	2" single slot	1.5mm	63	50.8	15	18	512g



Handrail Systems Slotted

JOINERS

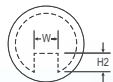
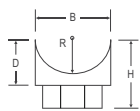


Flush Joiner 'In-Line' AISI 316

Code	Tube	Wall	A	B	C	H	W	Wgt
RSST-2004	2" single slot	1.5mm	43	50.8	3.0	15	18	118g

Flush Joiner '90° Tee' AISI 316

Code	Tube	Wall	A	B	H	W	Wgt
RSST-2006	2" single slot	1.5mm	66	50.8	15	18	718g



Perpendicular Joiner 'Flush Fitting' AISI 316

- Join posts to a horizontal h/rail or join horizontal h/rail to vertical posts
- Fix joiners to top h/rail with screws or rivets through the underneath internal

Code	Tube	Wall	B	D	H1	H2	R	W	Wgt
RSST-2027	2" single slot	1.5mm	50.8	31	54	15	18	2"	210g



H/RAIL SYSTEMS SLOTTED

Showcase

Slotted tubing + end caps
+ round base plates



* Alternate products may be available, contact your supplier for further information

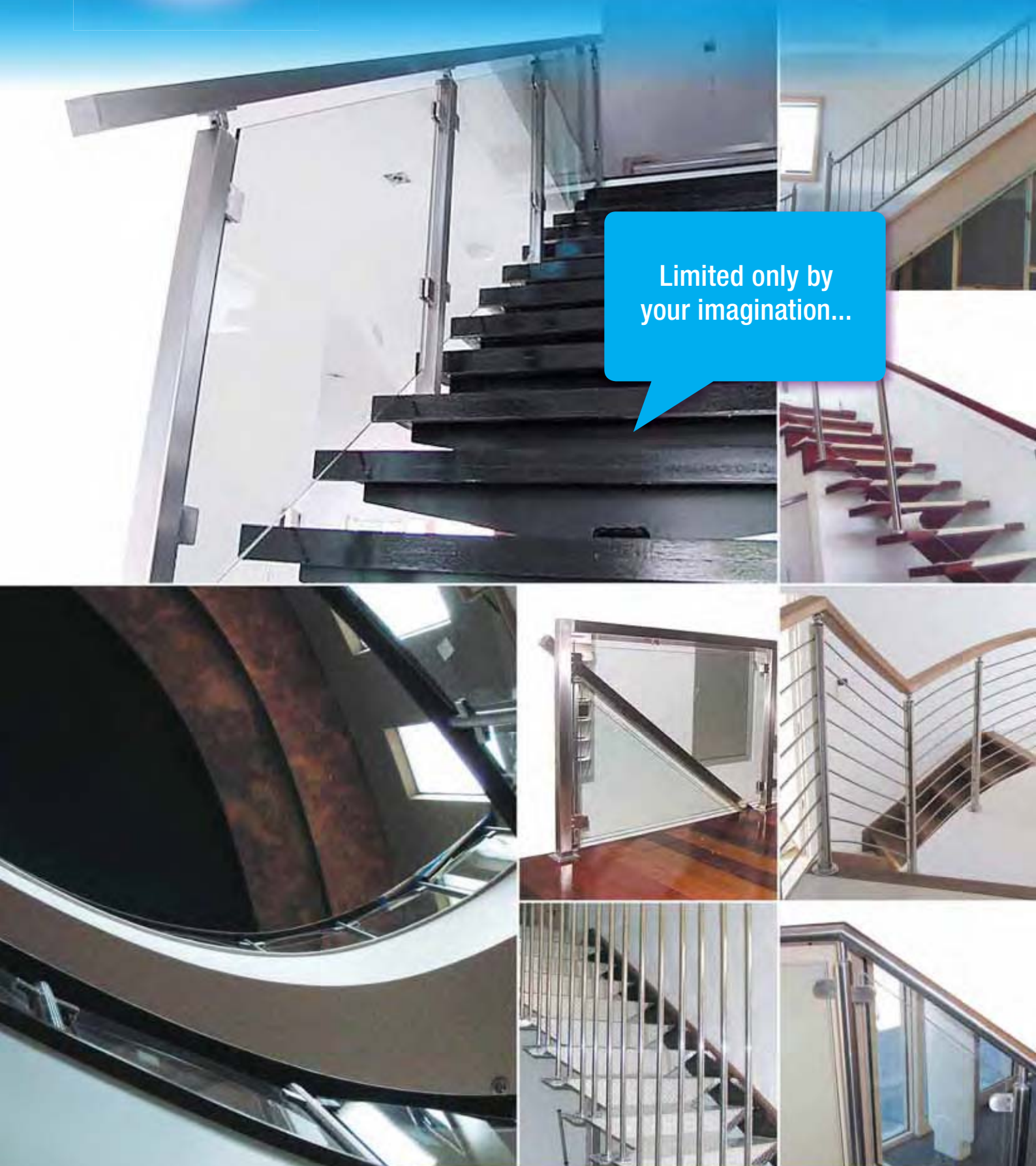


Product Showcase

HANDRAIL SYSTEMS / WIRE ROPE



Limited only by
your imagination...





Product Showcase

HANDRAIL SYSTEMS / WIRE ROPE



PRODUCT SHOWCASE





Product Showcase

HANDRAIL SYSTEMS / WIRE ROPE



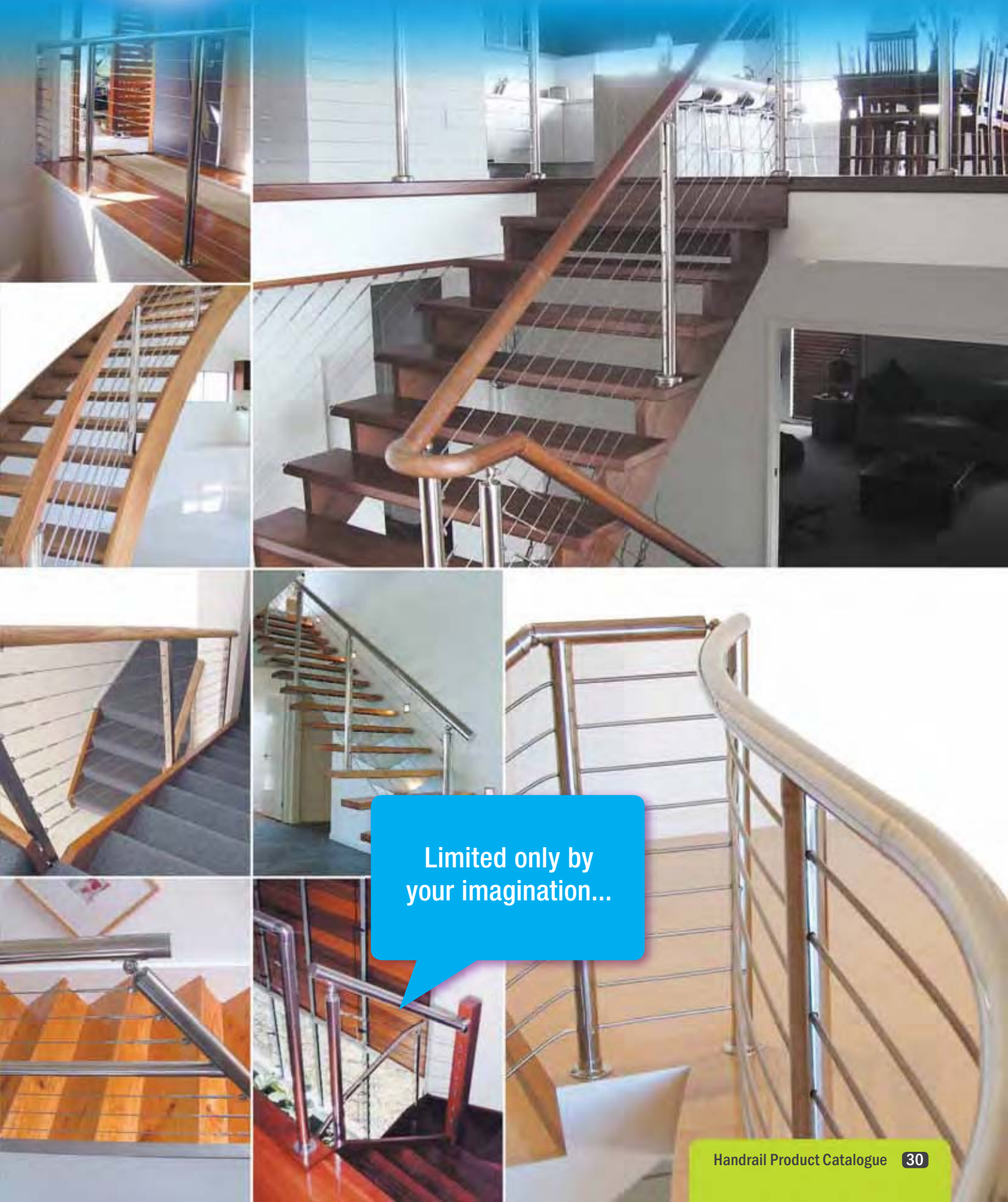
PRODUCT SHOWCASE





Product Showcase

HANDRAIL SYSTEMS / WIRE ROPE



Limited only by
your imagination...



Product Showcase

HANDRAIL SYSTEMS / GLASS PANELS



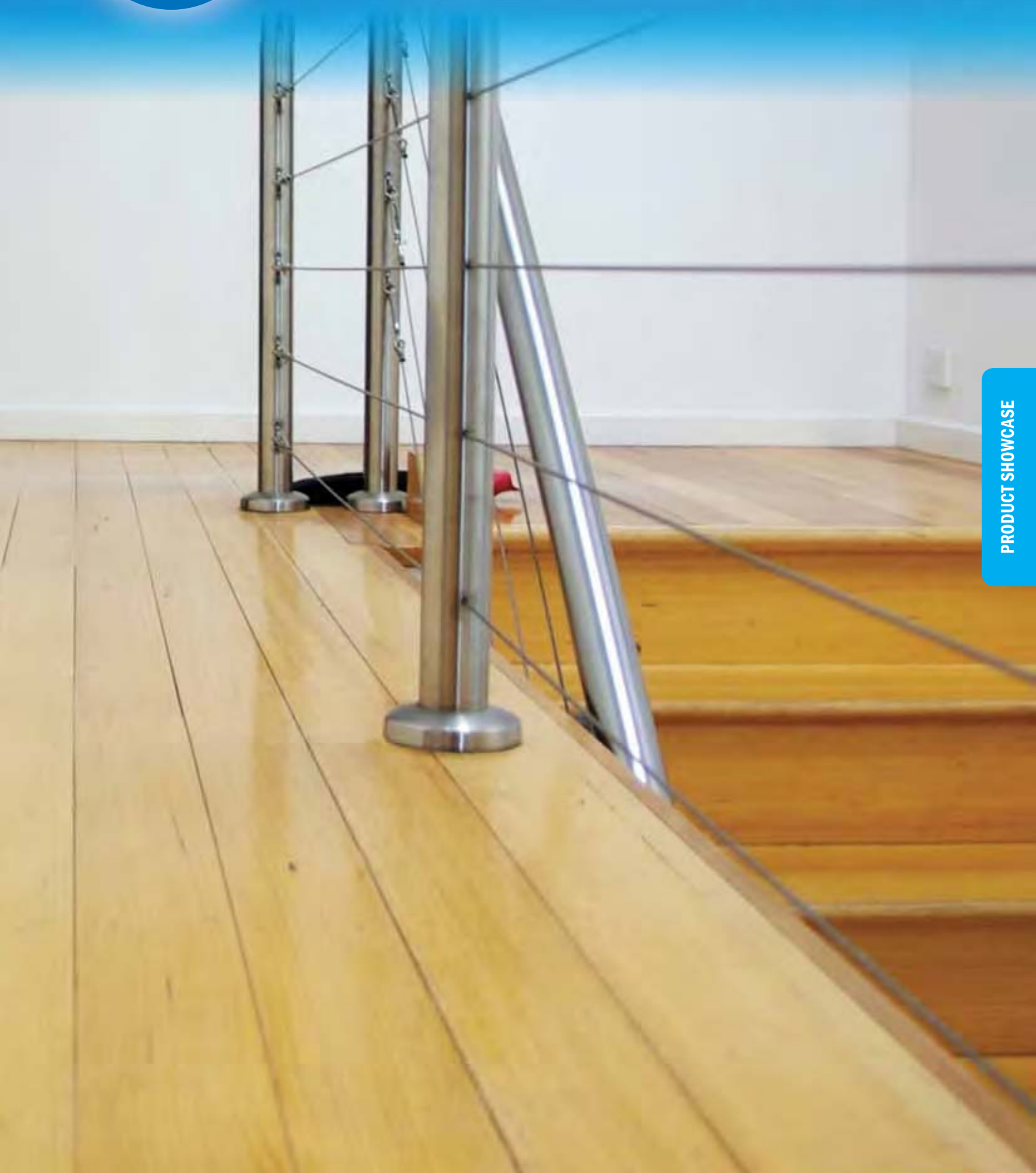
PRODUCT SHOWCASE

Need inspiration?
More ideas inside...



Product Showcase

HANDRAIL SYSTEMS / GLASS PANELS

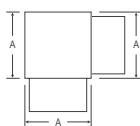


PRODUCT SHOWCASE



H/rail Systems Square (Satin)

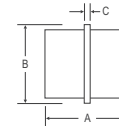
FLUSH JOINERS // END CAP



Square Flush Joiner '90°' AISI 316 (Satin)

- Satin (180g) finished modular handrail components
- Heavy duty cast components suitable also on commercial sites
- Epoxy glue, pop rivet or weld together fittings

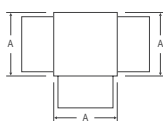
Code	Suit Tube	Wall	A	B	Wgt
ST-2002	2" square	1.5mm	50.8	50.8	455g



Square Flush Joiner 'In-Line' AISI 316 (Satin)

- Satin (180g) finished modular handrail components
- Heavy duty cast components suitable also on commercial sites
- Epoxy glue, pop rivet or weld together fittings

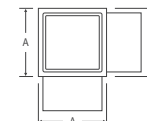
Code	Suit Tube	Wall	A	B	C	Wgt
ST-2004	2" square	1.5mm	66	50.8	6.0	254g



Square Flush Joiner 'Tee' AISI 316 (Satin)

- Satin (180g) finished modular handrail components
- Heavy duty cast components suitable also on commercial sites
- Epoxy glue, pop rivet or weld together fittings

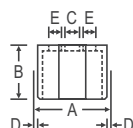
Code	Suit Tube	Wall	A	B	C	Wgt
ST-2005	2" square	1.5mm	50.8	50.8	50.8	533g



Square Flush Joiner '90° Tee' AISI 316 (Satin)

- Satin (180g) finished modular handrail components
- Heavy duty cast components suitable also on commercial sites
- Epoxy glue, pop rivet or weld together fittings

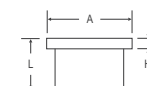
Code	Suit Tube	Wall	A	B	Wgt
ST-2006	2" square	1.5mm	50.8	50.8	552g



Square Perpendicular Joiner 'Flush Fitting' AISI 316

- Join posts to a horizontal handrail or horizontal handrails to vertical posts
- Fix with screws or rivets through the underneath internal
- Can be used in conjunction with either satin or mirror finish square tube

Code	Suit Tube	Wall
ST-2027	2" square	1.5mm



Square End Cap 'Flat' AISI 316 (Satin)

- Satin (180g) finished modular handrail components
- Heavy duty cast components suitable also on commercial sites
- Epoxy glue, pop rivet or weld together fittings

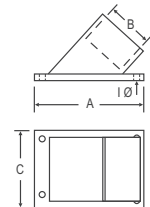
Code	Suit Tube	Wall	A	H	L	Wgt
ST-2019	2" square	1.5mm	50.8	4.0	35	174g

H/RAIL SYSTEMS SQUARE



H/rail Systems Square (Satin)

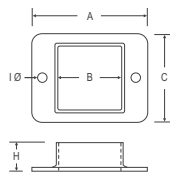
BASE PLATES // FLANGES



Square Wall Stop Flange '37°' AISI 316 (Satin)

- Satin (180g) finished modular handrail components
- Heavy duty cast components suitable also on commercial sites
- Epoxy glue, pop rivet or weld together fittings

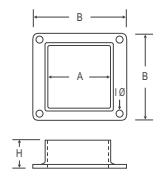
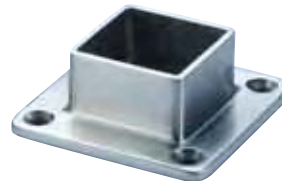
Code	Suit Tube	Wall	A	B	C	I	Wgt
ST-2015	2" square	1.5mm	155	50.8	80	8.0	690g



Square - Oblong Base Plate/Flange AISI 316 (Satin)

- Satin (180g) finished modular handrail components
- Heavy duty cast components suitable also on commercial sites
- Epoxy glue, pop rivet or weld together fittings

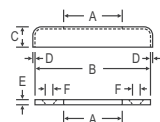
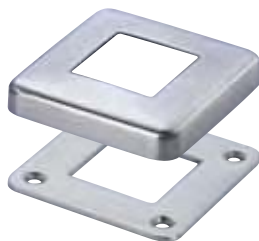
Code	Suit Tube	Wall	A	B	C	H	I	Wgt
ST-2014	2" square	1.5mm	100	50.8	75	38	6.0	355g



Square Base Plate/Flange AISI 316 (Satin)

- Satin (180g) finished modular handrail components
- Heavy duty cast components suitable also on commercial sites
- Epoxy glue, pop rivet or weld together fittings

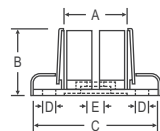
Code	Suit Tube	Wall	A	B	H	I	Wgt
ST-2016	2" square	1.5mm	50.8	100	38	6.0	400g



Square Base Plate With Cover (Weld) AISI 316 (Satin)

- 4-hole base and cover set
- Satin (180g) finished modular handrail components
- This item must be welded

Code	Suit Tube	Wall	A	B	C	D	E	F	Wgt
ST-2001A	2" square	1.5mm	50.8	84	14	1.0	3.0	6.0	148g



Square Adjustable 'Heavy Duty' Base Plate With Cover AISI 316 (Satin)

- Height adjustable concealed heavy duty base plate & cover set
- Contains self-holding fins that grip onto the outside of the tube
- 8 outside holes and 1 centre hole on base for optimum support

Code	Suit Tube	A	B	C	D	E	Wgt
ST-2099	2" square	50.8	60	101	8.0	10.0	732g

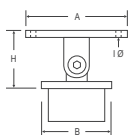
H/RAIL SYSTEMS SQUARE

* Alternate products may be available, contact your supplier for further information



H/rail Systems Square (Satin)

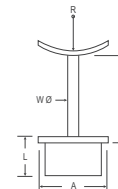
ADJUSTABLE RAIL SUPPORT // POST REDUCERS



Square Adjustable Rail Support 'Flat Top' AISI 316 (Satin)

- Satin (180g) finished modular handrail components
- Heavy duty cast components suitable also on commercial sites
- Epoxy glue, pop rivet or weld together fittings

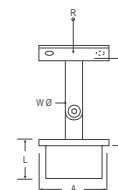
Code	Suit Tube	Wall	A	B	H	I	Wgt
ST-315AP	2" square	1.5mm	66	50.8	50	6.0	375g



Square - Round Post Reducer 'In-Line' AISI 316 (Satin)

- Reducer to allow square intermediate posts with round handrail
- Satin (180g) finished modular handrail components
- Heavy duty cast components suitable also on commercial sites
- Epoxy glue, pop rivet or weld together fittings

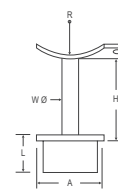
Code	Suit Tube	Wall	A	H	L	R	W	Wgt
ST-2020	2" square	1.5mm	50.8	70	35	2"	12	278g



Square - Round Post Reducer 'Adjustable' AISI 316 (Satin)

- Reducer to allow square posts to angled round handrail
- Satin (180g) finished modular handrail components
- Heavy duty cast components suitable also on commercial sites
- Epoxy glue, pop rivet or weld together fittings

Code	Suit Tube	Wall	A	H	L	R	W	Wgt
ST-2021	2" square	1.5mm	50.8	70	35	2"	16	265g



Square - Round Post Reducer '90° Corner' AISI 316 (Satin)

- Reducer to allow square 90° corner posts to round handrail
- Satin (180g) finished modular handrail components
- Heavy duty cast components suitable also on commercial sites
- Epoxy glue, pop rivet or weld together fittings

Code	Suit Tube	Wall	A	H	L	R	W	Wgt
ST-2022	2" square	1.5mm	50.8	70	35	2"	12	284g

H/RAIL SYSTEMS SQUARE



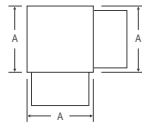
Showcase

Square handrail + end cap adjustable rail support + square base plate/flange



H/rail Systems Square (Mirror)

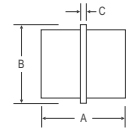
FLUSH JOINERS // END CAP



Square Flush Joiner '90°' AISI 316 (Mirror)

- Mirror finished modular handrail components
- Heavy duty cast components suitable also on commercial sites
- Epoxy glue, pop rivet or weld together fittings

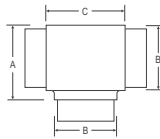
Code	Suit Tube	Wall	A	B	Wgt
MST-2002	2" square	1.5mm	50.8	50.8	455g



Square Flush Joiner 'In-Line' AISI 316 (Mirror)

- Mirror finished modular handrail components
- Heavy duty cast components suitable also on commercial sites
- Epoxy glue, pop rivet or weld together fittings

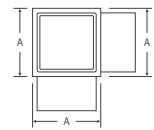
Code	Suit Tube	Wall	A	B	C	Wgt
MST-2004	2" square	1.5mm	66	50.8	6.0	254g



Square Flush Joiner 'Tee' AISI 316 (Mirror)

- Mirror finished modular handrail components
- Heavy duty cast components suitable also on commercial sites
- Epoxy glue, pop rivet or weld together fittings

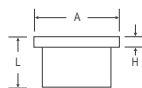
Code	Suit Tube	Wall	A	B	C	Wgt
MST-2005	2" square	1.5mm	50.8	50.8	50.8	533g



Square Flush Joiner '90° Tee' AISI 316 (Mirror)

- Mirror finished modular handrail components
- Heavy duty cast components suitable also on commercial sites
- Epoxy glue, pop rivet or weld together fittings

Code	Suit Tube	Wall	A	B	Wgt
MST-2006	2" square	1.5mm	50.8	50.8	552g



Square End Cap 'Flat' AISI 316 (Mirror)

- Mirror finished modular handrail components
- Heavy duty cast components suitable also on commercial sites
- Epoxy glue, pop rivet or weld together fittings

Code	Suit Tube	Wall	A	H	L	Wgt
MST-2019	2" square	1.5mm	50.8	4.0	35	174g



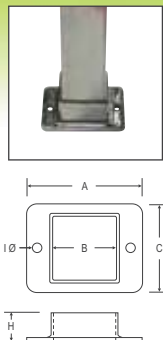
H/RAIL SYSTEMS SQUARE

* Alternate products may be available, contact your supplier for further information



H/rail Systems Square (Mirror)

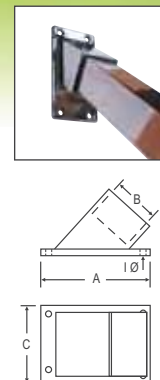
BASE PLATES // FLANGES // POST REDUCERS



Square - Oblong Base Plate/Flange AISI 316 (Mirror)

- Mirror finished modular handrail components
- Heavy duty cast components suitable also on commercial sites
- Epoxy glue, pop rivet or weld together fittings

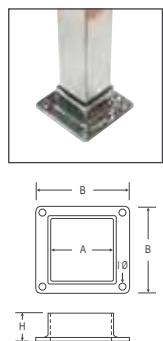
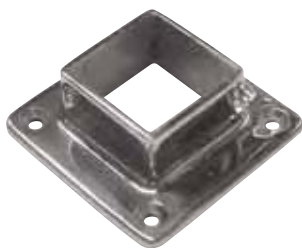
Code	Suit Tube	Wall	A	B	C	H	I	Wgt
MST-2014	2" square	1.5mm	100	50.8	75	38	6.0	355g



Square Wall Stop Flange '37' AISI 316 (Mirror)

- Mirror finished modular handrail components
- Heavy duty cast components suitable also on commercial sites
- Epoxy glue, pop rivet or weld together fittings

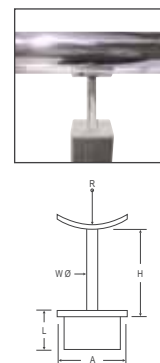
Code	Suit Tube	Wall	A	B	C	I	Wgt
MST-2015	2" square	1.5mm	155	51.5	80	8.0	690g



Square Base Plate/Flange AISI 316 (Mirror)

- Mirror finished modular handrail components
- Heavy duty cast components suitable also on commercial sites
- Epoxy glue, pop rivet or weld together fittings

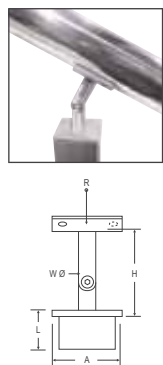
Code	Suit Tube	Wall	A	B	H	I	Wgt
MST-2016	2" square	1.5mm	50.8	100	38	6.0	400g



Square - Round Post Reducer 'In-Line' AISI 316 (Mirror)

- Reducer to allow square intermediate posts with round handrail
- Mirror finished modular handrail components
- Heavy duty cast components suitable also on commercial sites
- Epoxy glue, pop rivet or weld together fittings

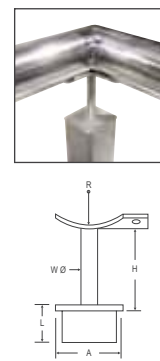
Code	Suit Tube	Wall	A	H	L	R	W	Wgt
MST-2020	2" square	1.5mm	50.8	70	35	2"	12	278g



Square - Round Post Reducer 'Adjustable' AISI 316 (Mirror)

- Reducer to allow square posts to angled round handrail
- Mirror finished modular handrail components
- Heavy duty cast components suitable also on commercial sites
- Epoxy glue, pop rivet or weld together fittings

Code	Suit Tube	Wall	A	H	L	R	W	Wgt
MST-2021	2" square	1.5mm	50.8	70	35	2"	16	265g



Square - Round Post Reducer '90° Corner' AISI 316 (Mirror)

- Reducer to allow square 90° corner posts to round handrail
- Mirror finished modular handrail components
- Heavy duty cast components suitable also on commercial sites
- Epoxy glue, pop rivet or weld together fittings

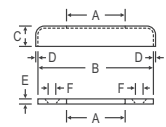
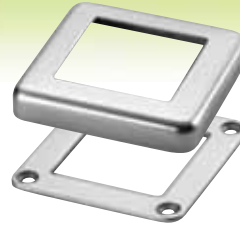
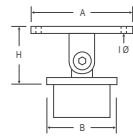
Code	Suit Tube	Wall	A	H	L	R	W	Wgt
MST-2022	2" square	1.5mm	50.8	70	35	2"	12	284g

H/RAIL SYSTEMS SQUARE



H/rail Systems Square (Mirror)

ADJUSTABLE RAIL SUPPORT // BASE PLATES



Square Adjustable Rail Support 'Flat Top' AISI 316 (Mirror)

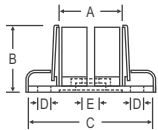
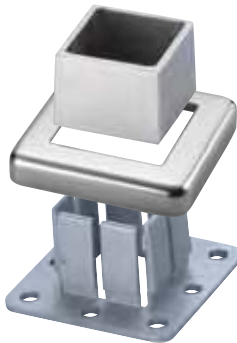
- Mirror finished modular handrail components
- Heavy duty cast components suitable also on commercial sites
- Epoxy glue, pop rivet or weld together fittings

Code	Suit Tube	Wall	A	B	H	I	Wgt
MST-315AP	2" square	1.5mm	66	50.8	50	6.0	375g

Square Base Plate With Cover (Weld) AISI 316 (Mirror)

- 4-hole base and cover set
- Mirror finished modular handrail components
- This item must be welded

Code	Suit Tube	Wall	A	B	C	D	E	F	Wgt
MST-2001A	2" square	1.5mm	50.8	84	14	1.0	3.0	6.0	148g



Square Adjustable Heavy Duty Base Plate With Cover AISI 316 (Mirror)

- Height adjustable concealed heavy duty base plate & cover set
- Contains self-holding fins that grip onto the outside of the tube
- 8 outside holes and 1 centre hole on base for optimum support

Code	Suit Tube	A	B	C	D	E	Wgt
MST-2099	2" square	50.8	60	101	8.0	10.0	732g



H/RAIL SYSTEMS SQUARE

Showcase

Square tubing + flush joiners + square base plates

* Alternate products may be available, contact your supplier for further information



Glass Clamps

APPLICATIONS // INSTALLATION STEPS



Side-Hold Glass Clamps

Limited only by your imagination, our range of glass clamp assemblies offer the perfect solution for functional and aesthetic handrail setups. With an attractive surface finish and a simple assembly method they are the perfect compliment to a stainless steel handrail and glass panel combination.

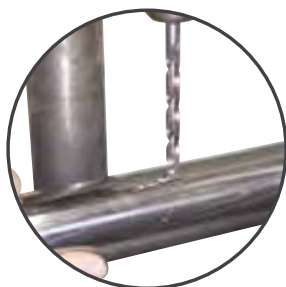
These versatile high quality glass clamps can be used for:

- Balustrades
- Semi-frameless and framed pool fencing
- Feature walls and kitchen splashbacks
- Shower doors/framework

Associated Features:

- Easy to install with no glass drilling required
- Taiwanese manufactured to J&G optimum standards
- Minimal specialised tools required
- No previous experience required
- Professional results

Glass Clamp Installation Steps



Step 1

Drill hole to suit outside diameter of blind rivet nut



Step 2

Insert blind rivet nut to post with hand tool



Step 3

Installed blind rivet nut ready for use



Step 4

Screw button head cap screw into blind rivet nut through glass clamp to fix half of glass clamp to post



Step 5

Install appropriate rubber gaskets to both halves of glass clamp



Step 6

Fit glass into place, screw second half of glass clamp to hold glass



Hot Tip

Insertion of blind rivet nuts is easy with our blind rivet nut hand tools



Glass Clamps

SMALL / MEDIUM 'D' TYPE



GC-300



GC-301



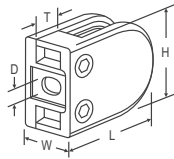
MGC-300



MGC-301

Glass Clamp Small 'D' Type AISI 316 (Satin)

- Gaskets sold separately, order to suit glass thickness
- Fix to posts with blind rivet nuts and cap screws
- Satin surface finish clamps to suit 6.0 & 8.0mm glass
- Clamps can support approx. 60-80kgs per 2 clamps vertically positioned



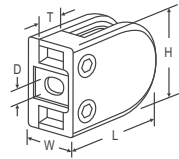
Code	Suit Glass	Suit Post	H	L	W	T	D	Wgt
GC-300	6.0, 8.0mm	Square/Flat	40	50	23	16	9.0	157g
GC-301	6.0, 8.0mm	2" Round	40	50*	23	16	9.0	165g

* Note 'L' measurement for GC-301 is from centre of radius

Sold Each

Glass Clamp Small 'D' Type AISI 316 (Mirror)

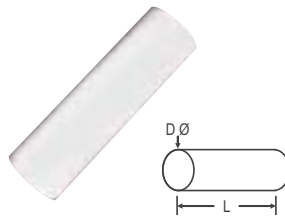
- Gaskets sold separately, order to suit glass thickness
- Fix to posts with blind rivet nuts and cap screws
- Mirror surface finish clamps to suit 6.0 & 8.0mm glass
- Clamps can support approx. 60-80kgs per 2 clamps vertically positioned



Code	Suit Glass	Suit Post	H	L	W	T	D	Wgt
MGC-300	6.0, 8.0mm	Square/Flat	40	50	23	16	9.0	165g
MGC-301	6.0, 8.0mm	2" Round	40	50	23	16	9.0	175g

* Note 'L' measurement for MGC-301 is from centre of radius

Sold Each



Rubber Gaskets For Small Glass Clamps

Code	Suit Clamp	Suit Glass	Sold
GG-300-06	GC/MGC-300,301	6.0mm	Pair
GG-300-08	GC/MGC-300,301	8.0mm	Pair

Glass Clamp Nylon Centre Pin (Optional)

- Optional nylon centre pin for heavy glass panels
- Hole drilling in glass required for pins

Code	Suit Clamp	D	L	Sold
GPN-310	GC/MGC-310,311	6.0	20	Each

Rubber Gaskets For Medium Glass Clamps

Code	Suit Clamp	Suit Glass	Sold
GG-310-06	GC/MGC-310,311	6.0mm	Pair
GG-310-08	GC/MGC-310,311	8.0mm	Pair
GG-310-10	GC/MGC-310,311	10.0mm	Pair

GLASS CLAMPS



GC-310



GC-311



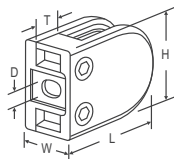
MGC-310



MGC-311

Glass Clamp Medium 'D' Type AISI 316 (Satin)

- Gaskets sold separately, order to suit glass thickness
- Fix to posts with blind rivet nuts and cap screws
- Satin surface finish clamps to suit 6.0, 8.0 & 10.0mm glass
- Clamps can support approx. 60-80kgs per 2 clamps vertically positioned



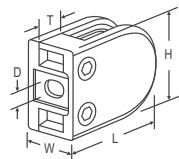
Code	Suit Glass	Suit Post	H	L	W	T	D	Wgt
GC-310	6.0, 8.0, 10.0mm	Square/Flat	45	63	26	16	9.0	270g
GC-311	6.0, 8.0, 10.0mm	2" Round	45	63	26	16	9.0	275g

* Note 'L' measurement for GC-311 is from centre of radius

Sold Each

Glass Clamp Medium 'D' Type AISI 316 (Mirror)

- Gaskets sold separately, order to suit glass thickness
- Fix to posts with blind rivet nuts and cap screws
- Mirror surface finish clamps to suit 6.0, 8.0 & 10.0mm glass
- Clamps can support approx. 60-80kgs per 2 clamps vertically positioned



Code	Suit Glass	Suit Post	H	L	W	T	D	Wgt
MGC-310	6.0, 8.0, 10.0mm	Square/Flat	45	63	26	16	9.0	270g
MGC-311	6.0, 8.0, 10.0mm	2" Round	45	63	26	16	9.0	285g

* Note 'L' measurement for MGC-311 is from centre of radius

Sold Each

* Alternate products may be available, contact your supplier for further information



Glass Clamps

LARGE 'D' TYPE



GC-320



GC-321



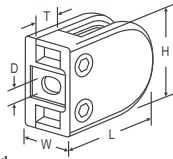
MGC-320



MGC-321

Glass Clamp Large 'D' Type AISI 316 (Satin)

- Gaskets sold separately, order to suit glass thickness
- Fix to posts with blind rivet nuts and cap screws
- Satin surface finish clamps to suit 8.0, 10.0 & 12.0mm glass
- Clamps can support approx. 60-80kgs per 2 clamps vertically positioned



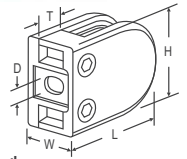
Code	Suit Glass	Suit Post	H	L	W	T	D	Wgt
GC-320	8.0, 10.0, 12.0mm	Square/Flat	55	60	32	16	9.0	370g
GC-321	8.0, 10.0, 12.0mm	2" Round	55	60	32	16	9.0	370g

* Note 'L' measurement for GC-321 is from centre of radius

Sold Each

Glass Clamp Large 'D' Type AISI 316 (Mirror)

- Gaskets sold separately, order to suit glass thickness
- Fix to posts with blind rivet nuts and cap screws
- Mirror surface finish clamps to suit 8.0, 10.0 & 12.0mm glass
- Clamps can support approx. 60-80kgs per 2 clamps vertically positioned



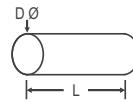
Code	Suit Glass	Suit Post	H	L	W	T	D	Wgt
MGC-320	8.0, 10.0, 12.0mm	Square/Flat	55	60	32	16	9.0	385g
MGC-321	8.0, 10.0, 12.0mm	2" Round	55	60	32	16	9.0	390g

* Note 'L' measurement for MGC-321 is from centre of radius

Sold Each



NOTE:
GASKETS
SOLD
SEPERATELY



Glass Clamp Nylon Centre Pin (Optional)

- Optional nylon centre pin for heavy glass panels
- Hole drilling in glass required for pins

Code	Suit Clamp	D	L	Sold
GPN-320	GC/MGC-320,321	6.0	26	Each

Rubber Gaskets For Large Glass Clamps

Code	Suit Clamp	Suit Glass	Sold
GG-320-08	GC/MGC-320,321	8.0mm	Pair
GG-320-10	GC/MGC-320,321	10.0mm	Pair
GG-320-12	GC/MGC-320,321	12.0mm	Pair

GLASS CLAMPS

Showcase

Tubing + oblong bases
+ glass clamps





Glass Clamps

MEDIUM 'D' TYPE SUPPORTS



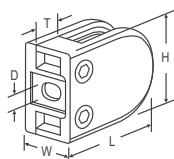
GC-310-L



GC-311-L

Glass Clamp Medium 'D' Type L/H Support AISI 316 (Satin)

- Gaskets sold separately, order to suit glass thickness
- Fix to posts with blind rivet nuts and cap screws
- L/Hand corner glass hold for supporting glass
- Satin surface finish clamps to suit 6.0, 8.0 & 10.0mm glass
- Unique design to stop slippage of excessively heavy panels of glass



Code	Suit Glass	Hold	Suit Post	H	L	W	T	D	Wgt
GC-310-L	6.0, 8.0, 10.0mm	L/H	Square/Flat	45	63	26	16	9.0	271g
GC-311-L	6.0, 8.0, 10.0mm	L/H	2" Round	45	63	26	16	9.0	295g

* Note 'L' measurement for GC-311-L is from centre of radius

Sold Each



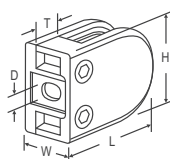
MGC-310-L



MGC-311-L

Glass Clamp Medium 'D' Type L/H Support AISI 316 (Mirror)

- Gaskets sold separately, order to suit glass thickness
- Fix to posts with blind rivet nuts and cap screws
- L/Hand corner glass hold for supporting glass
- Mirror surface finish clamps to suit 6.0, 8.0 & 10.0mm glass
- Unique design to stop slippage of excessively heavy panels of glass



Code	Suit Glass	Hold	Suit Post	H	L	W	T	D	Wgt
MGC-310-L	6.0, 8.0, 10.0mm	L/H	Square/Flat	45	63	26	16	9.0	279g
MGC-311-L	6.0, 8.0, 10.0mm	L/H	2" Round	45	63	26	16	9.0	300g

* Note 'L' measurement for MGC-311-L is from centre of radius

Sold Each



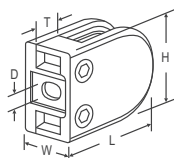
GC-310-R



GC-311-R

Glass Clamp Medium 'D' Type R/H Support AISI 316 (Satin)

- Gaskets sold separately, order to suit glass thickness
- Fix to posts with blind rivet nuts and cap screws
- R/Hand corner glass hold for supporting glass
- Satin surface finish clamps to suit 6.0, 8.0 & 10.0mm glass
- Unique design to stop slippage of excessively heavy panels of glass



Code	Suit Glass	Hold	Suit Post	H	L	W	T	D	Wgt
GC-310-R	6.0, 8.0, 10.0mm	R/H	Square/Flat	45	63	26	16	9.0	271g
GC-311-R	6.0, 8.0, 10.0mm	R/H	2" Round	45	63	26	16	9.0	295g

* Note 'L' measurement for GC-311-R is from centre of radius

Sold Each



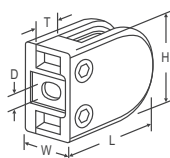
MGC-310-R



MGC-311-R

Glass Clamp Medium 'D' Type R/H Support AISI 316 (Mirror)

- Gaskets sold separately, order to suit glass thickness
- Fix to posts with blind rivet nuts and cap screws
- R/Hand corner glass hold for supporting glass
- Mirror surface finish clamps to suit 6.0, 8.0 & 10.0mm glass
- Unique design to stop slippage of excessively heavy panels of glass



Code	Suit Glass	Hold	Suit Post	H	L	W	T	D	Wgt
MGC-310-R	6.0, 8.0, 10.0mm	R/H	Square/Flat	45	63	26	16	9.0	279g
MGC-311-R	6.0, 8.0, 10.0mm	R/H	2" Round	45	63	26	16	9.0	300g

* Note 'L' measurement for MGC-311-R is from centre of radius

Sold Each

**NOTE:
GASKETS
SOLD
SEPERATELY**



Rubber Gaskets For Medium Glass Clamps

Code	Suit Clamp	Suit Glass	Sold
GG-310-06	GC/MGC-310,311	6.0mm	Pair
GG-310-08	GC/MGC-310,311	8.0mm	Pair
GG-310-10	GC/MGC-310,311	10.0mm	Pair



Hot Tip

For large panes of glass use the corner 'shelf' system to eliminate glass slippage



Glass Clamps

GLASS CLAMPS SQUARE TYPE



GC-210



GC-211



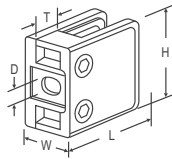
MGC-210



MGC-211

Glass Clamp Small Square Type AISI 316 (Satin)

- Gaskets sold separately, order to suit glass thickness
- Fix to posts with blind rivet nuts and cap screws
- Satin surface finish clamps to suit 6.0 & 8.0mm glass
- Clamps can support approx. 60-80kgs per 2 clamps vertically positioned



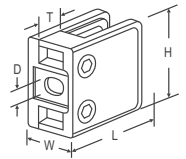
Code	Suit Glass	Suit Post	H	L	W	T	D	Wgt
GC-210	6.0, 8.0mm	Square/Flat	45	45	28	16	9.0	203g
GC-211	6.0, 8.0mm	2" Round	45	45	28	16	9.0	222g

* Note 'L' measurement for GC-211 is from centre of radius

Sold Each

Glass Clamp Small Square Type AISI 316 (Mirror)

- Gaskets sold separately, order to suit glass thickness
- Fix to posts with blind rivet nuts and cap screws
- Mirror surface finish clamps to suit 6.0 & 8.0mm glass
- Clamps can support approx. 60-80kgs per 2 clamps vertically positioned



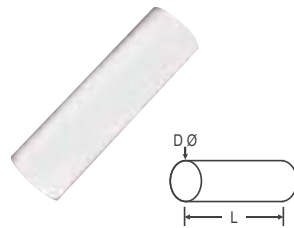
Code	Suit Glass	Suit Post	H	L	W	T	D	Wgt
MGC-210	6.0, 8.0mm	Square/Flat	45	45	28	16	9.0	209g
MGC-211	6.0, 8.0mm	2" Round	45	45	28	16	9.0	230g

* Note 'L' measurement for MGC-211 is from centre of radius

Sold Each



NOTE: GASKETS SOLD SEPERATELY



NOTE: GASKETS SOLD SEPERATELY

Rubber Gaskets For Small Glass Clamps

Code	Suit Clamp	Suit Glass	Sold
GG-210-06	GC/MGC-210,211	6.0mm	Pair
GG-210-08	GC/MGC-210,211	8.0mm	Pair

Glass Clamp Nylon Centre Pin (Optional)

- Optional nylon centre pin for heavy glass panels
- Hole drilling in glass required for pins

Code	Suit Clamp	D	L	Sold
GPN-200	GC/MGC-200,201	6.0	20	Each

Rubber Gaskets For Large Glass Clamps

Code	Suit Clamp	Suit Glass	Sold
GG-200-08	GC/MGC-200,201	8.0mm	Pair
GG-200-10	GC/MGC-200,201	10.0mm	Pair
GG-200-12	GC/MGC-200,201	12.0mm	Pair



GC-200



GC-201



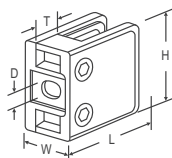
MGC-200



MGC-201

Glass Clamp Large Square Type AISI 316 (Satin)

- Gaskets sold separately, order to suit glass thickness
- Fix to posts with blind rivet nuts and cap screws
- Satin surface finish clamps to suit 8.0, 10.0 & 12.0mm
- Clamps can support approx. 60-80kgs per 2 clamps vertically positioned



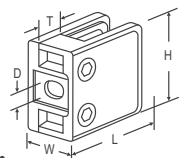
Code	Suit Glass	Suit Post	H	L	W	T	D	Wgt
GC-200	8.0, 10.0, 12.0mm	Square/Flat	55	55	32	16	9.0	398g
GC-201	8.0, 10.0, 12.0mm	2" Round	55	55	32	16	9.0	417g

* Note 'L' measurement for GC-201 is from centre of radius

Sold Each

Glass Clamp Large Square Type AISI 316 (Mirror)

- Gaskets sold separately, order to suit glass thickness
- Fix to posts with blind rivet nuts and cap screws
- Mirror surface finish clamps to suit 8.0, 10.0 & 12.0mm
- Clamps can support approx. 60-80kgs per 2 clamps vertically positioned



Code	Suit Glass	Suit Post	H	L	W	T	D	Wgt
MGC-200	8.0, 10.0, 12.0mm	Square/Flat	55	55	32	16	9.0	406g
MGC-201	8.0, 10.0, 12.0mm	2" Round	55	55	32	16	9.0	431g

* Note 'L' measurement for MGC-201 is from centre of radius

Sold Each



Product Showcase

HANDRAIL SYSTEMS / GLASS CLAMPS



Limited only by
your imagination...

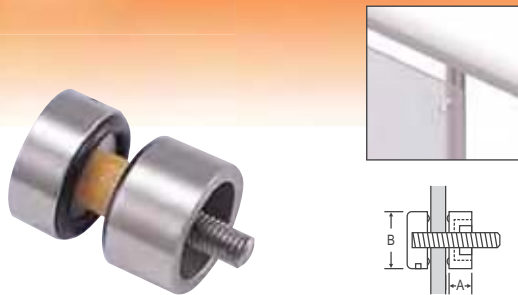


GLASS CLAMPS



Glass Clamps

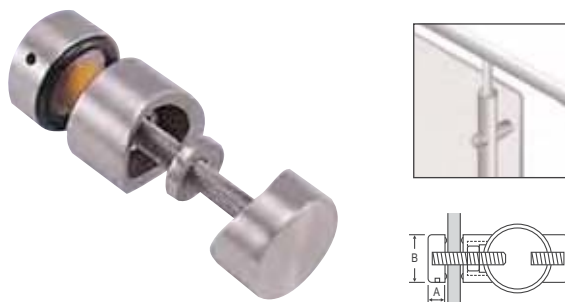
GLASS PINS / HANDRAIL SUPPORTS



Glass Pin Square Type AISI 316 (Mirror)

- Attractive easy to use bracket
- **NOTE: Glass panels require pre-drilling**

Code	Suit Post	Suit Glass	Thread	A	B	Wgt
GP-424S	Square/Flat	6.0-16.0mm	M8	15	30	133g



Glass Pin Round Type AISI 316 (Mirror)

- Attractive easy to use bracket
- **NOTE: Glass panels require pre-drilling**

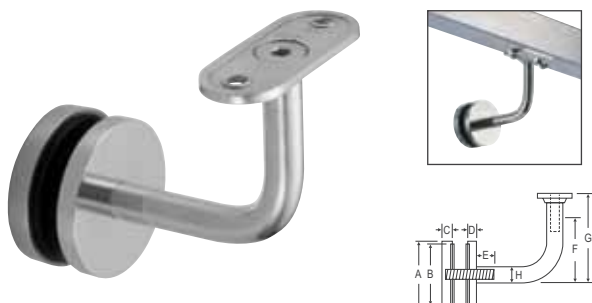
Code	Suit Post	Suit Glass	Thread	A	B	Wgt
GP-508SR	2"Round	6.0-16.0mm	M8	15	30	140g



Glass Pin Round Type 2-Side Hold AISI 316 (Mirror)

- Attractive easy to use bracket
- **NOTE: Glass panels require pre-drilling**

Code	Suit Post	Suit Glass	Thread	A	B	Wgt
GP-508LR	2"Round	6.0-16.0mm	M8	15	30	215g



Glass Handrail Support 'Flat Top' AISI 316

- Attractive support for fixing posts to glass panels
- Flat top with countersunk holes allows a handrail to be attached without the need for welding
- **NOTE: Glass panels require pre-drilling**

Code	Suit Post	Suit Glass	Thread	A	B	C	D	E	F	G	H
GP-2029	Square/Flat	12.0mm	M8	50	47	8	6	10	58	66	12

Weight 318g

Glass Handrail Support 'Radiused' AISI 316

- Attractive support for fixing posts to glass panels
- Radiused top with countersunk holes allows a handrail to be attached without the need for welding
- **NOTE: Glass panels require pre-drilling**

Code	Suit Post	Suit Glass	Thread	A	B	C	D	E	F	G	H
GP-2028	2"Round	12.0mm	M8	50	47	8	6	10	58	66	12

Weight 334g



GLASS HANDRAIL SUPPORTS



Glass Clamps

DIVERSE GLASS CLAMPS



Introducing the Diverse Glass Clamp (DGC) for elegant, strong and safe frameless fencing for pools and balustrades. The DGC system is revolutionary because it works without channels. This not only enables it to be fitted to an existing surface, but also allows broken panels to be easily removed and replaced without removing the clamp itself. It is engineered, tested and certified.

- Glass removable at any time without removing clamp itself
- Panels replaced easily, allowing open access to fenced area
- In new projects, the system can be installed after all other trades have finished
- Glass does not reach the floor, allowing ample drainage
- DGC system allows horizontal, vertical & tilt glass adjustment
- Refer page 54 for glass panel sizes



Stainless Steel Diverse Glass Clamp AISI 316 (Mirror)

- Install by core drilling method

Code	Suit Glass	Grade	Finish	Wgt
SSDGC	12.0mm	316	Mirror	3.15kg

CORE DRILL FIXING SHEET AVAILABLE



GLASS CLAMPS

Hot Tip

Create almost completely frameless fencing with Diverse Glass Clamps

* Alternate products may be available, contact your supplier for further information



Product Showcase

DIVERSE GLASS CLAMPS



Limited only by
your imagination...

GLASS CLAMPS



Product Showcase

DIVERSE GLASS CLAMPS



GLASS CLAMPS

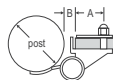
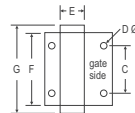
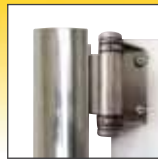
* Alternate products may be available, contact your supplier for further information



Glass Hinges + Latches



POOL FENCING HINGES

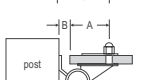
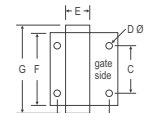
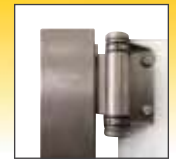


Self Closing Hinge Kits Post to Glass AISI 316 (Round)

- Spring loaded, tension adj. stainless steel hinges for glass fencing applications
- Kit contains 2 hinges, grommets and gaskets complete for 1 gate
- Load rating 50kg per pair
- **NOTE: Glass panels require pre-drilling**

Weight 683g

Code	Suit Post	Suit Glass	A	B	C	D	E	F	G
SCH-R-G	2"Round	10.0mm	23	10	48	6	22	76	90

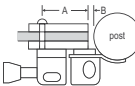
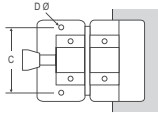


Self Closing Hinge Kits Post to Glass AISI 316 (Square)

- Spring loaded, tension adj. stainless steel hinges for glass fencing applications
- Kit contains 2 hinges, grommets and gaskets complete for 1 gate
- Load rating 50kg per pair
- **NOTE: Glass panels require pre-drilling**

Weight 683g

Code	Suit Post	Suit Glass	A	B	C	D	E	F	G
SCH-S-G	Square	10.0mm	37	10	48	6	22	76	90

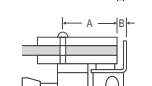
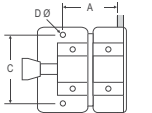
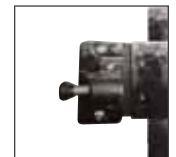


Magnetic Gate Latch Post to Glass AISI 316 (Round)

- Side pull magnetic gate latch for fencing applications
- **NOTE: Glass panels require pre-drilling**

Weight 733g

Code	Suit Post	Suit Glass	A	B	C	D
MGL-R-G	2"Round	10.0mm	43	6	80	10



Magnetic Gate Latch Post to Glass AISI 316 (Square)

- Side pull magnetic gate latch for fencing applications
- **NOTE: Glass panels require pre-drilling**

Weight 733g

Code	Suit Post	Suit Glass	A	B	C	D
MGL-S-G	Square/Flat	10.0mm	57	9	80	10

GLASS HINGES + LATCHES

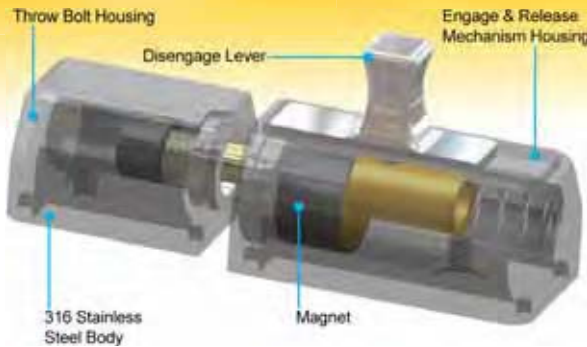
Hot Tip

J & G slotted tubing + pool fencing hinges offer a minimalist designer look



Glass Hinges + Latches

GATEGUARD SYSTEM // HINGE CAP // LATCHES



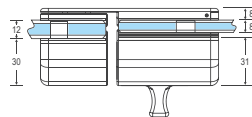
GateGuard Hinge Cap - Anti Toe Hold

- Remove cap supplied with hinge and replace with anti toe hold hinge cap, if required for compliance reasons

Code
GG-HC

Introducing GateGuard, a cleverly designed hinge and latch system for all frameless and semi-frameless applications. These products feature clean, flush surfaces and a highly polished stainless steel finish.

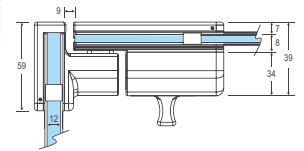
- Hinge & latch bodies (inc. screws) manufactured from 316 s/steel
- 3 Year manufacturer's warranty on complete latch & hinge range
- Self-closing hinges, concealed adjustment for tensioning
- Latches are self locking and incorporate concealed fixings
- No protruding nuts or welded plates, etc



GateGuard Glass To Glass Latch 180°

- Glass to glass 180° application
- Suits 8mm & 10mm glass gates
- Fixed glass panel must be 12mm
- **NOTE: Glass panels require pre-drilling**

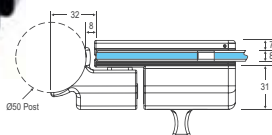
Code
GG-GL



GateGuard Glass To Glass Latch 90°

- Glass to glass 90° corner application (open from external side only)
- Suits 8mm & 10mm glass gates
- Fixed glass panel must be 12mm
- **NOTE: Glass panels require pre-drilling**

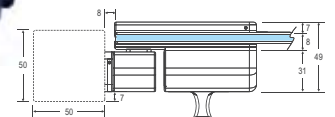
Code
GG-GL90



GateGuard Glass To Round Post Latch

- Glass to round post application
- Suits 8mm & 10mm glass gates
- Suits 50mm round post
- **NOTE: Glass panels require pre-drilling**

Code
GG-RPL



GateGuard Glass To Square Post Latch

- Glass to square post application
- Suits 8mm & 10mm glass gates, post fixings not supplied
- **NOTE: Glass panels require pre-drilling**

Code
GG-SPL

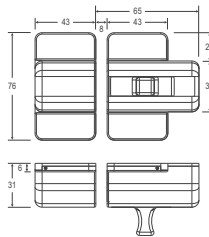
GLASS HINGES + LATCHES

* Alternate products may be available, contact your supplier for further information



Glass Hinges + Latches

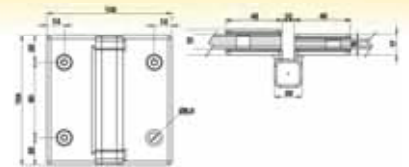
GATEGUARD LATCH // HINGES // HINGE CAP



GateGuard Surface Mount Latch 180°

- Fixings not supplied
- Surface Mount Latch Only
- **NOTE: Glass panels require pre-drilling**

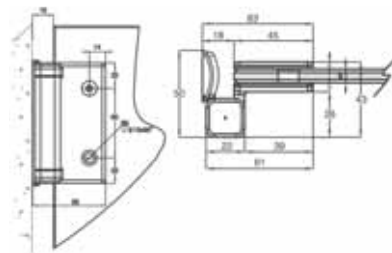
Code
GG-FML



GateGuard Glass To Glass Hinge 180°

- Glass to glass straight line application
- Suits 8mm & 10mm glass gates
- Fixed glass panel must be 12mm
- **NOTE: Glass panels require pre-drilling**

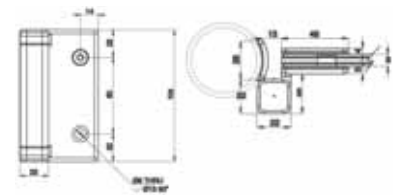
Code
GG-GH



GateGuard Glass To Wall Hinge

- Glass to perpendicular wall application
- Suits 8mm & 10mm glass gates, wall fixings not supplied
- **NOTE: Glass panels require pre-drilling**

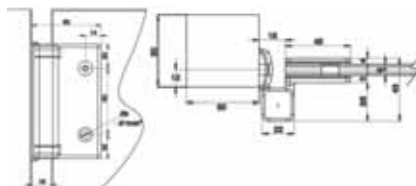
Code
GG-PH1



GateGuard Glass To Round Post Hinge

- Glass to round post application
- Suits 8mm & 10mm glass gates
- Suits 50mm round post, post fixings not supplied
- **NOTE: Glass panels require pre-drilling**

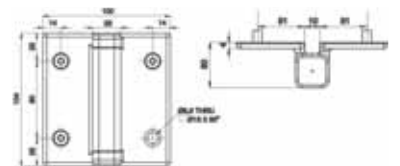
Code
GG-PH2



GateGuard Glass To Square Post Hinge

- Glass to square post application
- Suits 8mm & 10mm glass gates, post fixings not supplied
- **NOTE: Glass panels require pre-drilling**

Code
GG-PH3



GateGuard Surface Mount Hinge 90°- 180°

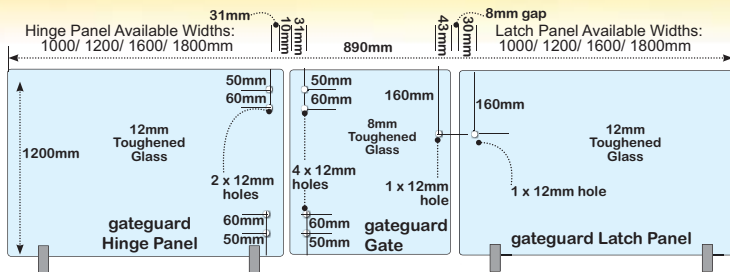
- Fixings not supplied
- **NOTE: Glass panels require pre-drilling**

Code
GG-FMH



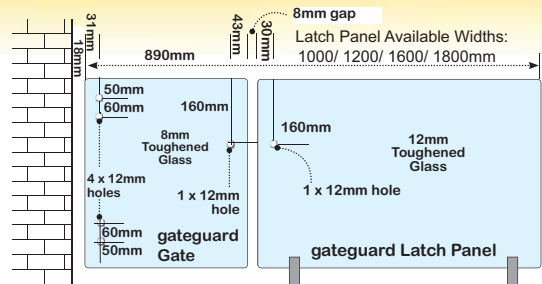
Glass Hinges + Latches

GATEGUARD GATE CONFIGURATIONS



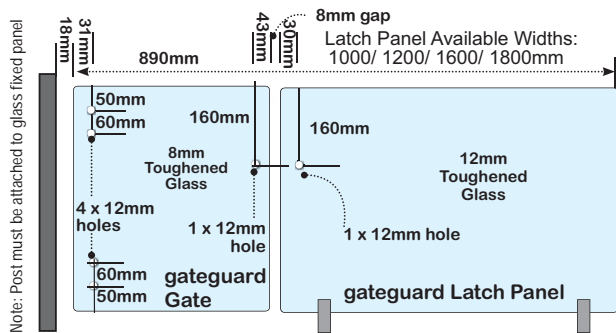
Configuration 1

GateGuard hinge to latch panel



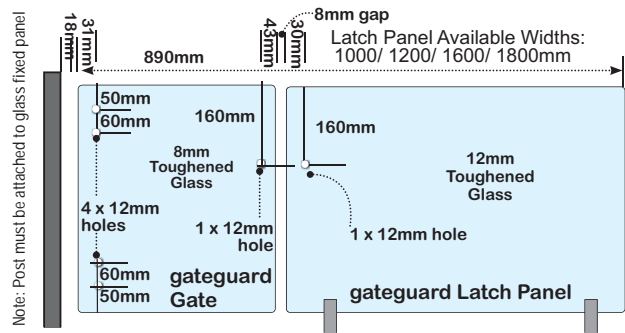
Configuration 2

GateGuard wall to latch panel



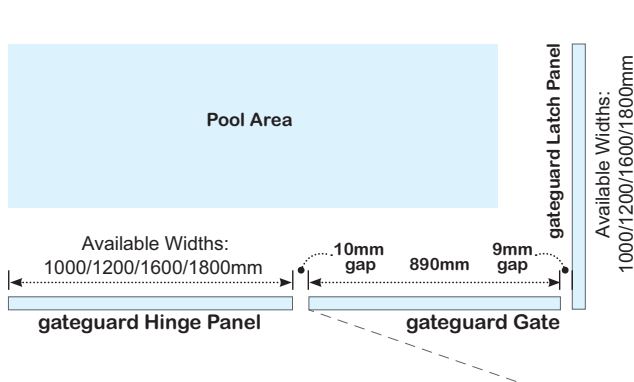
Configuration 3

GateGuard square post to latch panel



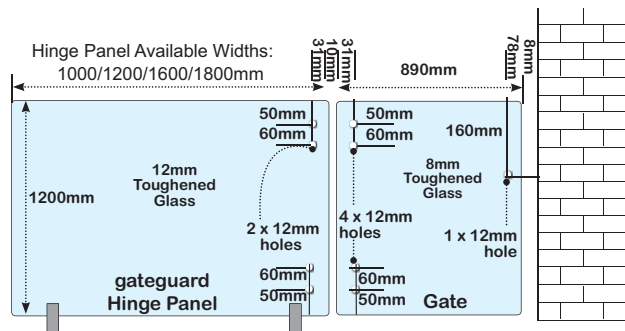
Configuration 4

GateGuard round post to latch panel



Configuration 5

Hinge to 90° glass corner



Configuration 6

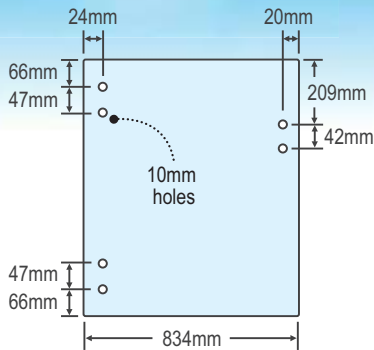
Hinge to wall/ square post

* Alternate products may be available, contact your supplier for further information



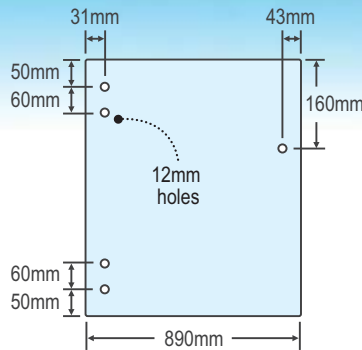
Toughened Glass Panels

10MM PANELS // DRILLED 12MM PANELS



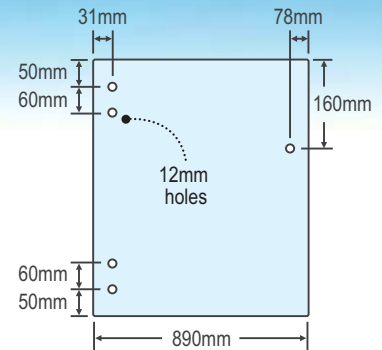
Option 1

Suit D&D side pull latch



Option 2

Suit glass to glass 180° latch



Option 3

Suit glass to glass 90° latch

Standard Gate - 8mm Thick with 6 x Holes at 10mm Diameter

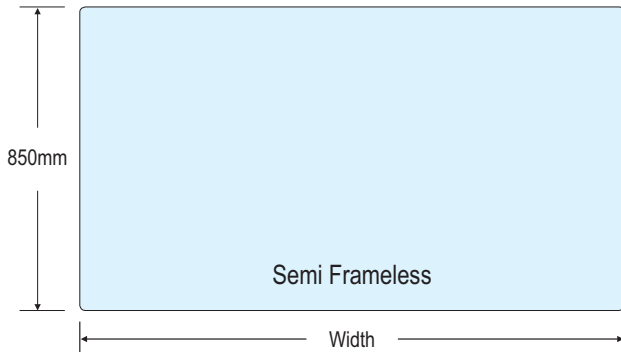
- Side Pull Gate with 2mm corner radius

Code	Description	Width	Height	Sqm	Weight
08SLG-0834	Side Pull Gate	834	1200	1.00m ²	20kg

GateGuard Gate - 8mm Thick with 5 x Holes at 12mm Diameter

- Side Pull Gate with 2mm corner radius

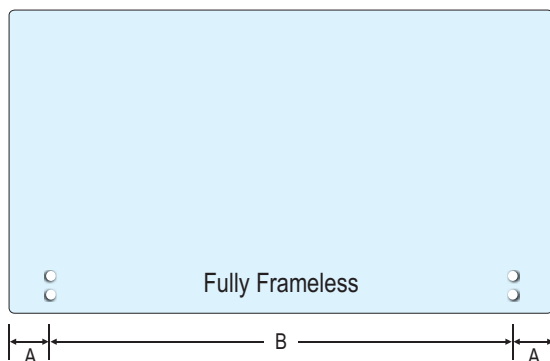
Code	Description	Width	Height	Sqm	Weight
08FGG-0890	Frameless Gate	890	1200	1.07m ²	21kg
08SFGG-0890	Semi Frameless Gate	890	1200	1.07m ²	21kg



10mm Toughened Glass Panels - 850mm High

* 950mm high also available on request

Code	Width	Sqm	Wgt.	Code	Width	Sqm	Wgt.
850BG-0480	480	0.41m ²	10kg	850BG-0980	980	0.83m ²	21kg
850BG-0530	530	0.45m ²	11kg	850BG-1030	1030	0.88m ²	22kg
850BG-0580	580	0.49m ²	12kg	850BG-1080	1080	0.92m ²	23kg
850BG-0630	630	0.54m ²	13kg	850BG-1130	1130	0.96m ²	24kg
850BG-0680	680	0.58m ²	14kg	850BG-1180	1180	1.00m ²	25kg
850BG-0730	730	0.62m ²	16kg	850BG-1230	1230	1.05m ²	26kg
850BG-0780	780	0.66m ²	17kg	850BG-1280	1280	1.09m ²	27kg
850BG-0830	830	0.71m ²	18kg	850BG-1330	1330	1.13m ²	28kg
850BG-0880	880	0.75m ²	19kg	850BG-1380	1380	1.17m ²	29kg
850BG-0930	930	0.79m ²	20kg	850BG-1430	1430	1.22m ²	30kg



Drilled 12mm Toughened Glass Panels

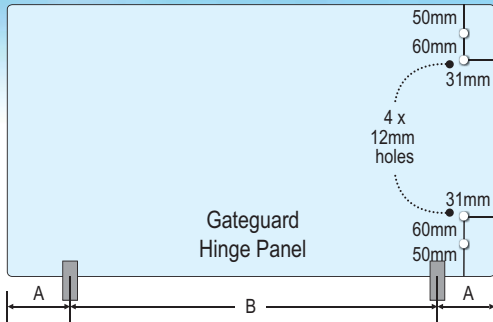
- For frameless fencing, flat polished edges with 5mm radius corners
- 4 x 20mm holes to suit Diverse Glass Clamp system (see page 45)

Code	Width	Height	A	B	Sqm	Weight
12F-0600	600	1200	100	400	0.72m ²	22kg
12F-0700	700	1200	100	500	0.84m ²	25kg
12F-0800	800	1200	150	500	0.96m ²	29kg
12F-0900	900	1200	150	600	1.08m ²	32kg
12F-1000	1000	1200	150	700	1.20m ²	36kg
12F-1100	1100	1200	200	700	1.32m ²	40kg
12F-1200	1200	1200	200	800	1.44m ²	43kg
12F-1300	1300	1200	200	900	1.56m ²	47kg
12F-1400	1400	1200	250	900	1.68m ²	50kg
12F-1500	1500	1200	250	1000	1.80m ²	54kg
12F-1600	1600	1200	250	1100	1.92m ²	58kg
12F-1700	1700	1200	250	1200	2.04m ²	61kg
12F-1800	1800	1200	300	1200	2.16m ²	65kg
12F-1900	1900	1200	250	1400	2.28m ²	68kg
12F-2000	2000	1200	300	1400	2.40m ²	72kg



Toughened Glass Panels

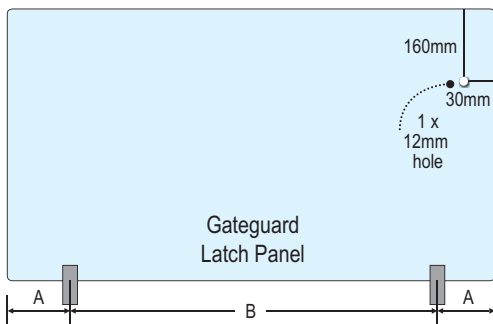
DRILLED 12MM PANELS



Drilled 12mm Toughened Panels - GateGuard 8 x Hole Hinge Panel

- For frameless fencing, flat polished edges with 5mm radius corners

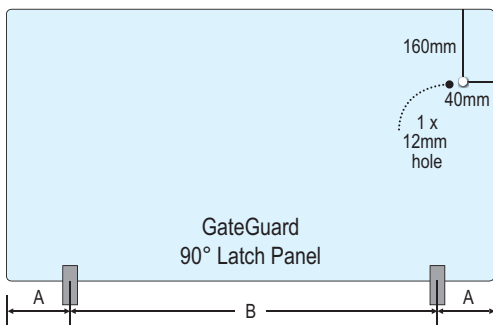
Code	Width	Height	A	B	Sqm	Weight
12FGGH-1000	1000	1200	150	700	1.20m ²	36kg
12FGGH-1200	1200	1200	200	800	1.44m ²	43kg
12FGGH-1600	1600	1200	250	1100	1.92m ²	58kg
12FGGH-1800	1800	1200	300	1200	2.16m ²	65kg



Drilled 12mm Toughened Panels - GateGuard 5 x Hole Latch Panel

- For frameless fencing, flat polished edges with 5mm radius corners

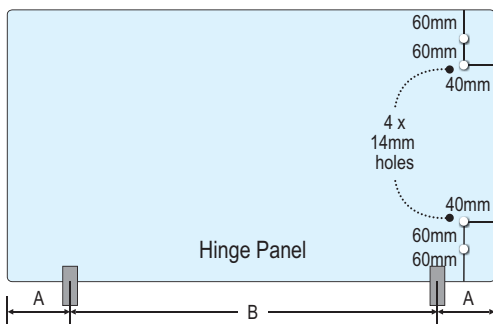
Code	Width	Height	A	B	Sqm	Weight
12FGGL-1000	1000	1200	150	700	1.20m ²	36kg
12FGGL-1200	1200	1200	200	800	1.44m ²	43kg
12FGGL-1600	1600	1200	250	1100	1.92m ²	58kg
12FGGL-1800	1800	1200	300	1200	2.16m ²	65kg



Drilled 12mm Toughened Panels - GateGuard 90° Latch Panel

- For frameless fencing, flat polished edges with 5mm radius corners

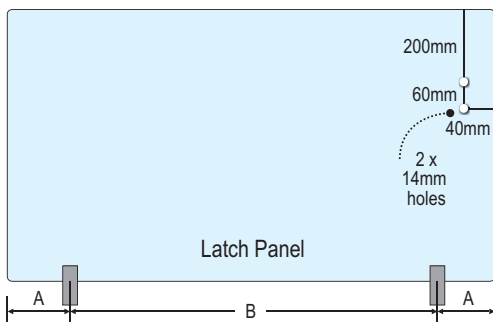
Code	Width	Height	Sqm	Weight
12FGG90L-1000	1000	1200	1.20m ²	36kg
12FGG90L-1200	1200	1200	1.44m ²	43kg
12FGG90L-1600	1600	1200	1.92m ²	58kg
12FGG90L-1800	1800	1200	2.16m ²	65kg



Drilled 12mm Toughened Panels - Standard 8 x Hole Hinge Panel

- For frameless fencing, flat polished edges with 5mm radius corners

Code	Width	Height	A	B	Sqm	Weight
12FH-1000	1000	1200	150	700	1.20m ²	36kg
12FH-1200	1200	1200	200	800	1.44m ²	43kg
12FH-1600	1600	1200	250	1100	1.92m ²	58kg
12FH-1800	1800	1200	300	1200	2.16m ²	65kg



Drilled 12mm Toughened Panels - Standard 6 x Hole Latch Panel

- For frameless fencing, flat polished edges with 5mm radius corners

Code	Width	Height	A	B	Sqm	Weight
12FL-1000	1000	1200	150	700	1.20m ²	36kg
12FL-1200	1200	1200	200	800	1.44m ²	43kg
12FL-1600	1600	1200	250	1100	1.92m ²	58kg
12FL-1800	1800	1200	300	1200	2.16m ²	65kg

* Alternate products may be available, contact your supplier for further information



Stainless Steel Protection

POLIGRAT SURFACE FINISHING PRODUCTS



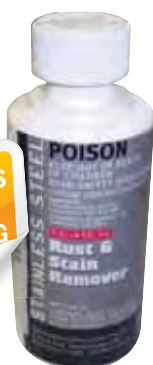
MSDS SHEETS AVAILABLE

Poligrat Surface Finishing Products

The unique Polinox range of surface finishing products employs the latest in German technology to bring our customers a range of surface cleaners and stain removers for stainless steel. To aid in product selection for your particular job, please read the following information.

For chemical composition and MSDS please contact us for more information.

REMOVES TEA STAINING



Polinox-US S/Steel Rust & Stain Remover

- Cleans and removes rust and stains such as tea staining
- Surface retains original polish after application
- Contact us for more information and MSDS
- Alternate sizes available on request

Code	Size
P-157-0020	200ml
P-157-0100	2 Kg

Rust and stain remover for efficient treatment of contaminated stainless steel. Discolouration is removed and full corrosion resistance is restored. Original surface polish is not compromised.

Application

- Apply undiluted by spray, brush or roller
- Leave for 30 mins to 3 hours depending on severity
- Rinse off with water
- Paste is corrosive, gloves, protective clothing & goggles must be worn

Uses

Commercial & domestic balustrading, architectural features, yacht bowrails & fittings, handrails.

CLEANS STAINLESS STEEL



Polinox-C S/Steel Cleaner & Restorer

- Cleans grime, salt deposits & surface contamination from s/steel
- Gives a metallic finish to s/steel
- Contact us for more information and MSDS
- Alternate sizes available on request

Code	Size
P-158-0010	1 Litre
P-158-0011	5 Litre

Acidic cleaner to degrease, clean and remove surface rust. Especially effective at removing water marks. Passivates the surface thereby increasing corrosion resistance. Original surface polish is not compromised.

Application

- Apply undiluted by brush, roller, cloth or spray unit
- Temperature of surface should be 5 to 30 degrees
- Leave for 15 to 45mins then rinse off with water
- This liquid is poison, protective clothing and gloves must be worn

Uses

Handrails, tanks & pipework for food/wine/dairy industry etc, transportation vehicles such as trucks & trains.

STAINLESS PROTECTION

PREVENTS FINGER MARKS



Polinox-CSG Cleanox S/Steel Cleaner & Preserver

- Cleans & prevents fingerprints and provides extra protection against staining on s/steel
- Provides a uniform surface finish to handrails etc and leaves a thin protective layer to prevent further soiling
- Contact us for more information and MSDS
- Alternate sizes available on request

Code	Size
P-162-200	200ml
P-162-1000	1 Litre
P-162-5000	5 Litre

Cleans and preserves surfaces which have been polished ground or glass bead treated. Makes surface less susceptible to fingerprints and prevents fingerprints reappearing. Minimises cleaning and care of decorative stainless, especially around handles. Provides uniform surface finish.

Application

- Apply undiluted by immersion, spraying or wiping
- After drying CLEANOX leaves a thin protective coating preventing soiling
- No need to rinse or wash off

Uses

Benchtops and splashbacks, kitchen appliances, handrails, door handles, display areas.



Stainless Steel Protection

INOX PROTECTIVE PRODUCTS



Lanox Heavy Duty MX4 Anti-Corrosion Lanolin Lubricant

- Heavy duty anti-moisture, anti-corrosion lubricant made with a high grade lubricating oil and lanolin base with specialised chemical compounds
- Contains no silicon, kerosene, acids or dieselene
- Does not become sticky, gooey or gum up
- Does not dry out or wash off with water
- Non-conductive, non-static, non-corrosive and has low flammability (non-aerosol)

Code	Size
INOX-300	300g Aerosol
INOX-5000	5L
INOX-20000	20L



Lanox MX4 Superior Anti-Corrosion Lanolin Grease

- Non-toxic, food grade approved lanolin grease
- Can be used as an anti-seize for bolts, nuts and threaded rod
- Prevents electrolysis between dissimilar metals
- Non-carcinogenic, bio-degradable, highly resistant to salt and acid corrosion, provides lasting protection
- Environmentally and user friendly

Code	Size
INOX-G-500	500g Tub
INOX-G-2500	2.5kg Tub



Inox MX5 Plus Extreme Pressure Liquid Lubricant

- PTFE is a premium grade extreme pressure anti-friction medium which provides increased lubrication ability between the surfaces
- Will not become tacky, alter surface tolerances, dry out or wash off with water
- Non-toxic, non-conductive, non-corrosive and non-staining. May affect some natural rubber products with continual long term use

Code	Size
P-162-200	200ml
P-162-1000	1 Litre
P-162-5000	5 Litre



Inox MX7 Extreme Pressure PTFE Paste

- Specifically formulated for ultra extreme pressure lubrication and where tough thread anti-seize applications are required
- Contains anti-corrosion additives

Code	Size
INOX-L-125	125g Tube

Inox Protective Products

J & G Trading are proud providers of Inox quality products. Inox is a quality product designed for heavy industrial use and where extreme climatic conditions prevail. Inox contains no silicon, acid, dieselene or kerosene. Inox will not harm metal points, surfaces, plastics, paints, enamels or finishes, fibreglass, formica or neoprene seals.

Inox does not dry out, gum up, become gooey or sticky or wash off with water! Inox is non-conductive, non-static, non-toxic, non-corrosive and non-staining.

Lanolin is a natural wax found in animal wool, especially the wool from sheep, commonly referred to as 'wool fat' or 'wool grease', it has wide spread uses. Lanolin adheres tenaciously to most surfaces providing a defensive shield that protects the treated surface from corrosion or oxidation.



STAINLESS PROTECTION

* Alternate products may be available, contact your supplier for further information



Tools & Accessories



POP RIVET TOOLS // BLIND RIVET NUT TOOLS



Professional Heavy Duty Lever-Type Pop Rivet Tool

Code	Range
LR-11	2.4,3.0/3.2,4.0,4.8/5.0mm



Hand Pop Rivet Tool '360° Swivel Head

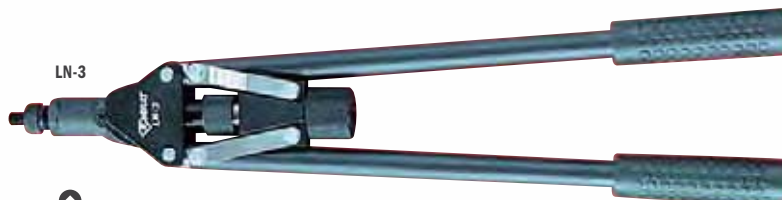
- Quality 360° swivel head pop rivet tool for those hard to reach areas

Code	Range
RHR-360	2.4 - 4.8mm

Hand Pop Rivet Tool 'Fixed Head'

- Quality pop rivet tool for fixing pop rivets

Code	Range
HR-1	2.4 - 4.8mm



Blind Rivet Nut Hand Tool

- For insertion of *stainless steel* rivet nuts
- For operating in place-limited areas
- Complete with steel carry case + full range of nose piece sizes

Code	Range
LN-3	M5 - M10

Blind Rivet Nut Hand Tool

- For fast insertion of *s/steel* rivet nuts
- Complete with quick threading unit and steel carry case, includes full range of nose piece sizes

Code	Range
LN-2	M5 - M10





Tools & Accessories



BLIND RIVET NUTS // RIVETS // EPOXY GLUE



Pop Rivets All Stainless Steel AISI 304

- Stainless Steel Shaft and Head

Code	Ø	Lgth	Sold
POP-53	4.0	8.5	each
POP-54	4.0	10.0	each
POP-64	4.8	11.0	each
POP-68	4.8	16.5	each



Blind Rivet Nut Small Flange AISI 304

- Blind rivet nut with small flange to allow fittings to be joined to handrail
- Install with LN-2 or LN-3 (see page 58)

Code	T	Drill	D	L	H	M	Sold
SBRN-6	M6	9.0	9	14	0.5	10	each
SBRN-8	M8	11.0	11	16	0.7	12	each



Replacement Mandrels For LN-2 / LN-3 Blind Rivet Nut Tools

- Replacement mandrel nose pieces for LN-2, LN-3 (page 58)

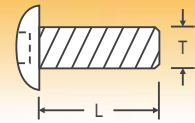
Code	Size
LN-M-5	M5
LN-M-6	M6
LN-M-8	M8
LN-M-10	M10



Two-Part Epoxy Glue Sets

- Heat resistant
- Epoxy glue sets for fast and easy assembly of handrail components to tube

Code	Size	Total
EP-906-TUBE	30gram/Piece	60gram
EP-906-300	300gram/Piece	600gram



Button Head Cap Screw AISI 304

- Use with blind rivet nut to fasten fittings/glass clamps to handrail

Code	T	L	Sold
BHTS-0530	M5	30.0	each
BHTS-0550	M5	52.7	each
BHTS-0620	M6	23.5	each
BHTS-0640	M6	40.0	each
BHTS-0820	M8	24.4	each
BHTS-0850	M8	54.5	each



Blind Rivet Nut Large Flange AISI 304

- Blind rivet nut with large flange to allow glass clamps to be joined to handrail
- Install with LN-2 or LN-3 (see page 58)

Code	T	D	L	H	M	Sold
BRN-5	M5	7	13	1.1	9.5	each
BRN-6	M6	9	16	1.5	12	each
BRN-8	M8	11	18	1.6	15	each
BRN-10	M10	12.5	21	2.0	16.5	each

Replacement Mandrel Sets For LN-2 / LN-3 Blind Rivet Nut Tools

Code	Range	Measurement
LN-M-SET	M5-M10	Metric
LN-I-SET	3/16"-1/4"-5/16"-3/8"	Imperial



TOOLS & ACCESSORIES

* Alternate products may be available, contact your supplier for further information



SUPERIOR SERVICE • QUALITY PRODUCTS



Also Available...

J & G Trading Product Catalogue with stainless steel balustrading, shade sail hardware, marine, lifting and rigging components, and much more! Contact us for your copy of this catalogue.

www.jgtrading.com.au

